

MICHIGAN BIRDS

and Natural History

April - May 2009

Volume 16 Number 2



A publication of Michigan Audubon

MICHIGAN BIRDS

and Natural History

April - May 2009

Volume 16 Number 2

MICHIGAN BIRDS *and Natural History* is a publication of Michigan Audubon and is published five times a year. Its mission is to provide a forum for the publication of research on the natural history of Michigan with an emphasis on birds. It is also the home of the Michigan Bird Survey, Michigan Butterfly Survey, Michigan Christmas Bird Counts, North American Migration Count, and the proceedings of the Michigan Bird Records Committee. Subscriptions are \$25.00 per year in the United States and \$30.00 elsewhere. They cover the current calendar year. Subscriptions can be obtained by sending a check along with your name and address to:

Michigan Audubon/MBNH
6011 W. St. Joseph Hwy., Suite 403
Lansing, Michigan 48917

If you would prefer to receive your subscription electronically rather than as a mailed paper copy, also include your email address with your subscription request.

MBNH Committee

Managing EditorCaroline de Mauriac
Layout Editor Don Tinson II
Survey Editor Adam M. Byrne
Photo Editor Allen T. Chartier
Copy Editor Bill Rapai
Peer Review Mike Bishop
Seasonal Survey Compilers Jon Wuepper, Jack Reinoehl,
Louis Dombroski, Adam M. Byrne
NAMC Compiler Jeff Buecking, Mike Petruca
Christmas Bird Count Compilers Glenn Palmgren, Adam M. Byrne
Banding Summaries Mike Bishop
Michigan Bird Records Committee Adam M. Byrne

Cover: With the appearance of this Green Violetear at a private residence in Cascade Twp., Kent Co., Michigan is now one of very few states outside of Texas with four records. Photo by Sheryl Nelson.

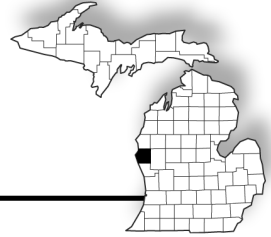


Printing: RiverRun Press, Kalamazoo, Michigan



Incidental Feeding Behavior in Gray Squirrels and White-tailed Deer

Dennis A. Meritt Jr.
Dept. of Biological Sciences
DePaul University
2325 N. Clifton Avenue
Chicago, IL 60614



Introduction

A variety of wildlife depend upon acorns for a significant portion of their diet. Birds and mammals of deciduous and mixed deciduous-evergreen forests feed on acorns each fall, especially in mast years when acorns are produced in abundance. More than 150 species of birds and mammals have been reported as using acorns for a portion of their diet, and there is no doubt that additional unidentified species also depend upon this source (Line, 2008). In Michigan, Wild Turkeys (*Meleagris gallopavo*), Blue Jays (*Cyanocitta cristata*), Red Squirrels (*Tamasciurus hudsonicus*), Eastern Gray Squirrels (*Sciurus carolinensis*), Eastern Fox Squirrels (*Sciurus niger*), Deer Mice (*Peromyscus maniculatus*), Raccoons (*Procyon lotor*), and White-tailed Deer (*Odocoileus virginianus*) are known acorn consumers (pers. obs.).

Methods

The study site was located in Pentwater Township, Oceana County, Michigan (N 43 degrees 47.593' W 086 degrees 25.965), in a barrier dune formation (DNR characterization). The elevation is 656 ft (~ 200 m). The soil is sandy loam that matches the U.S. Department of Agriculture's definition for the Nordhouse Series (J. Calus, pers. comm.) There is a small year-round water source in the center of the study area. The site is a mix of developing and maturing trees primarily a variety of Oaks (*Quercus* sp.) and White Pine (*Pinus strobus*). The understory is a mixture of low shrubs and ferns. A list of tree species and the percentage of each found at the site is provided in Table 1. These represent trees larger than 4 inches (10 cm) in diameter at breast height.

**Table 1. Tree Species Composition.**

Common Name	Scientific Name	Percentage
White Oak	<i>Quercus alba</i>	20
Northern Pin Oak	<i>Quercus ellipsoidalis</i>	25
Black Oak	<i>Quercus velutina</i>	13
Northern Red Oak	<i>Quercus rubra</i>	6
Red Maple	<i>Acer saccharum</i>	5
White Pine	<i>Pinus alba</i>	18
White Spruce	<i>Picea glauca</i>	1
Eastern Hemlock	<i>Tsuga canadensis</i>	9
Douglas Fir	<i>Pseudotsuga menziesii</i>	2
Northern White Cedar	<i>Thuja occidentalis</i>	1

[Identified using Barnes and Wagner (1981)]

Resident and migratory birds use this site. These include most of the common Midwestern species found in mixed deciduous forest. Wild Turkeys are seasonally plentiful. Cooper's Hawks (*Accipiter cooperii*) and Barred Owls (*Strix varia*) are frequently observed. Opossum (*Didelphis marsupialis*), Raccoon (*Procyon lotor*), Mink (*Mustela vison*), Striped Skunk (*Mephitis mephitis*), Red Fox (*Vulpes fulva*), Gray Fox (*Urocyon cinereoargenteus*), Eastern Gray Squirrel (*Sciurus carolinensis*), Red Squirrel (*Tamasciurus hudsonicus*), Eastern Flying Squirrel (*Glaucomys volans*), Porcupine (*Erethizon dorsatum*), and White-tailed Deer are present in the study area and reproduce annually.

Results

During August of 2008, beginning mid-month, acorns began to reach maturity. Eastern Gray Squirrels were observed in Oaks eating and retrieving acorns for scatter-hoarding for later use. At the same time, White-tailed Deer visited as part of their daily routine to acquire water and forage on available food items. These include three distinct assemblages of individuals that appeared separately: an adult doe with two female young of the year, two mature bucks, and two adult females.

On several occasions ($n=8$) between 0700 and 0745 hrs and again from 1700 to 1830 hrs Eastern Gray Squirrels and White-tailed deer fed simultaneously on White Oak acorns. Squirrels harvesting acorns in the

treetops dropped whole or partially eaten acorns and deer moved to the drop spot and consumed the acorn or acorn cluster. Deer movement at ground level mirrored squirrel activity in the trees in response to the fall of acorns. It was apparent that the deer were food searching below trees with actively foraging squirrels. It was also clear that when squirrel activity stopped that deer feeding switched to other available browse items nearly immediately.

Discussion

Eastern Gray Squirrels clean, eat, and scatter-hoard appropriate sized nuts including walnuts, hickory nuts and acorns (pers. obs.). Nuts if not consumed are buried singly in holes dug by the squirrels within their home range (pers. obs.). These are then covered with soil and ground debris; firmly tamped down, and serve as a winter food source (pers. obs.). MacClintock (1970) states that scatter-hoard sites were 50 to 100 feet from parent oak tree in her studies. Kurta (1995) reports that up to 85% of the squirrel buried nuts are recovered and used as winter food. Whitaker (1998) refers to the harvesting of acorns by squirrels as a “veritable rain of nuts” in the forest. Acorns are rated as excellent deer food (MDNR, 2007) and an important energy source (MDC, 2008). Studies have demonstrated that deer consume 70% of marked acorns during mast fall and expand their home range to include areas of acorn mast fall (McShea and Schwede, 1993). Whitaker (1998) makes a similar observation regarding range expansion adding these mammals rely on mast items including acorns. Jenkins and Bartlett (1959) discuss three classes of deer food, noting that acorns when available are good food. Duvendeck (1962) discusses the importance of acorns to Michigan deer.

Eastern Gray Squirrels and White-tailed Deer each treated acorns as a highly desirable food item at this study site. While it might be said that these two species competed for the same resource, without the squirrel foraging activities the deer would have had to rely on dropped acorns as a result of wind and seed maturation, resulting in fewer nuts more widely dispersed over time.

Acknowledgements

This note benefited from helpful reviewer and editorial comments. This is publication No. 23/09/08 from the Center for Studies of Biodiversity at DePaul University.

Literature Cited

- Barnes, B, and W.H. Wagner, Jr. 1981. *Michigan Trees: A Guide to the Trees of Michigan and the Great Lakes Region*. The University of Michigan Press. Ann Arbor.
- Duvendeck, J. 1962. *The Value of Acorns in the Diet of Michigan Deer*. J. Wildl. Manage. 26(4):371-379.
- Jenkins, D.H. and I.H. Bartlett. 1959. *Michigan White-tails*. Game Division. Michigan Department of Conservation. Lansing. 80 pp.
- Kurta, A. 1995. *Mammals of the Great Lakes Region*. The University of Michigan Press. Lansing.
- Line, L. 2008. *Slings and Arrows*. Audubon. 110(5):80, 82, 84, 86.
- MacClintock, D. 1970. *Squirrels of North America*. Van Nostrand Reinhold Company. New York.
- McShea, W.J. and G. Schwede. 1993. *Variable Acorn Crops: Responses of White-tail Deer and Other Mast Consumers*. J. Mammal. 74(4):999-1006.
- (MDC) Missouri Department of Conservation. 2008. *White-tail Deer Management: Planning Ahead for Wildlife Survival*. (mdc.mo.gov/landown/wild/deermgmt/deer. 9/3/08).
- (MDNR) Michigan Department of Natural Resources. 2007. *Forest Foods Deer Eat*. (www.michigan.gov. 9/3/08).
- Whitaker, J.O. 1998. *Mammals of the Eastern United States*. Cornell University Press. Ithaca, New York.

Late Autumn Population of Sandhill Cranes in Michigan

Ronald H. Hoffman

6142 Territorial Rd.

Pleasant Lake, MI 49272

Email: ronandjoanhoffman@yahoo.com

Early estimates of the Greater Sandhill Crane (*Grus canadensis tabida*) population in Michigan typically focused on counting pairs during the breeding season (Walkinshaw 1949, Walkinshaw and Wing 1955, Walkinshaw and Hoffman 1974, Hoffman 1989). As the abundance and distribution of the sandhill crane increased (Brewer et al. 1991), it has become increasingly difficult to census cranes during the breeding season.

Annually, beginning in late August in the Upper Peninsula (UP) and early September farther south in the state, cranes gather at traditional staging areas prior to migration. Walkinshaw (1949), Walkinshaw and Wing (1955), H. Wing (unpubl. field notes.) and others made counts at individual staging areas, but no coordinated surveys were conducted in Michigan until 1979. In 1979, an annual fall census was begun of the eastern population of cranes breeding in the Great Lakes states and southern Canada (Lovvorn and Kirkpatrick 1981). After the Lovvorn and Kirkpatrick (1981) report, there have been no published results of the annual fall census in Michigan.

This report documents the 1979-2008 changes in crane numbers and distribution based on fall censuses. These parameters are important for identifying and managing areas for cranes, wildlife viewing and photography.

Methods

L.E. Schumann of the U.S. Fish and Wildlife Service developed the protocol and coordinated the annual autumn censuses throughout the eastern United States from 1979-2002 (Schumann unpubl. annual reports). S. Kelly of the USFWS coordinated surveys from 2003 to present (Kelly unpubl annual reports). I coordinated the Michigan part of the census 2003-08. Counts in Michigan were scheduled for the last Friday in October \pm three days, except in 2005 when the date was 7 November. The scheduled date was chosen as late as possible to ensure that cranes had left the northern parts of their range and were concentrated in southern Lower Peninsula (SLP) or at Jasper-Pulaski Fish and Wildlife Area in northwestern Indiana. Counts

not taken on the scheduled date were carefully reviewed to avoid counting the same cranes at different areas.

Both professional and nonprofessional biologists participated in the survey. Observers recorded number of cranes, location, time, type of habitat, method of counting (roost or field) and weather conditions. Counts of cranes entering or leaving roosts were preferred to those made at feeding areas because cranes often dispersed \geq six miles (9.6 km) from roosts (personal observations). Staging areas were delineated to encompass night roosts and feeding areas that were within six miles (9.6 km) of one another.

Results

The fall population index for Michigan dramatically increased during the 30 years covered in this report (Table 1). Numbers ranged from a 1979 low of 757 to the high of 19,074 in 2007. The average rate of increase during the period was 11.1 % per year. Counts between successive years varied a mean 30% (range 1 – 120%). The five-year mean population index ranged from 1417 in 1979-83 to 15,226 in 2004-08. The largest increase occurred during the last five years when population index more than doubled and the average number of counties reporting cranes almost quadrupled.

Almost all of the cranes were distributed in 19 SLP counties during the 30-year survey (Table 1). Less than 1% of the total cranes were reported from two UP and four Northern Lower Peninsula (NLP) counties. The number of counties with cranes increased from an average of \leq four during the first 25 years of the survey to an average of 15 counties during the last five years. Five counties (Calhoun, Hillsdale, Jackson, Livingston and Washtenaw) with a history of crane use before 2004 accounted for 75 percent of the cranes reported in Michigan during the last five years while 17 counties with no previous reports contained the remaining 25%. Baker Sanctuary, Calhoun Co. and Haehnle Sanctuary, Jackson Co., usually attracted $>90\%$ of the state total before 2003, but dropped to $\sim 50\%$ afterwards.

From 1979–2008, counts at Big Marsh Lake roost in the Baker Sanctuary increased compared to the Mud Lake roost in the Haehnle Sanctuary (Table 1). From 1979-90 the Haehnle average population index of 1452 was six times higher than Baker's. During the next 10 years, counts at both areas averaged about the same, 2070. But from 2001-08 the Baker average population index rose to 5762 while it decreased to 1585 at Haehnle.

Hunting and weather altered crane numbers at autumn roosts. Cranes deserted a roost in Washtenaw County when waterfowl hunting began in

2007. Similar responses were reported at several roosts in Jackson County. Counts were affected during at least three years by abnormal rainfall at the Mud Lake roost. Only 553 cranes were tallied on 30 October 2006, when drought lowered water levels so only mudflats remained. During the previous three weeks an average 1273 cranes were reported and numbers returned to normal when water levels rose. Crane numbers decreased when above normal rainfall flooded night roosts in 2001 and 2008 (i.e. Mud Lake roost numbers declined from 2107 on 9 October to 593 on 29 October 2001 and in 2008 when only 339 cranes were counted 3 November). During September 2008, 7.6 in. (19 cm) of rain (>two times normal) flooded the wetland for the remainder of the fall. In each year the number of cranes counted at nearby roosts rose as numbers at Mud Lake decreased. It is suspected that cranes responded in a similar manner at other areas, but they were not as well documented.

During late October and early November 2004-08, cranes were found at 16 staging areas with a history of being used by >50 cranes for at least three years (Fig. 1). All of them were in SLP. Cranes were found only sporadically or in small numbers in areas further north in Menominee, Missaukee, Oceana, Ogemaw and Schoolcraft counties. The five-year population index at these 16 staging areas ranged from >6400 at Baker Sanctuary to three areas with <100 (Table 2). Almost 70% of the cranes were in 10 southwest Michigan staging areas (west of US 127). Only one roost was used at Big Marsh Lake, Baker Sanctuary. In contrast, cranes at the Jackson and Washtenaw staging area moved between >14 roosts spread over a large crescent shaped area, but never more than six miles (9.6 km) from one roost to the next.

Discussion

Cranes from throughout the Lower Peninsula (LP) migrate to staging areas in southern Michigan on their way to a major stopover area in northwest Indiana, Jasper-Pulaski Fish and Game Area (Lovvorn 1980). The Ontario population north of Lake Huron migrates through the Lower Peninsula (Boyd et al. 2008), while cranes further west in the UP migrate through Wisconsin (Urbanek 1990). The Algoma population has expanded from ~35 in 1977 (Tebbel 1981) to an estimated 9000 in 2004 (Boyd et al. 2008). Fall counts in SLP probably include cranes from the eastern third of the UP and the north shore of Lake Huron, but few from the western UP.

During the census period some cranes remain north of southern Michigan staging areas while others had already migrated further south. Reports of cranes lingering north of southern Michigan (e.g. >300 flying 7 November



2001 Presque Isle County [Chartier 2002]; 89 flying 15 November 2002, Macomb County [Chartier 2003]) suggest that this number is small compared to the total autumn population. The number of cranes at specific roosts often did not peak until mid to late November (e.g. at Haehnle, 3924 cranes were counted 24 November, 2003 when only 2975 were found on the census date, 3 November). It was assumed that the late influx of cranes at Haehnle included birds counted at other sites, but it is possible that some came from unknown northern areas. Hoffman (2003) found a trend of cranes in recent years migrating later in the fall. These cranes not being counted could become more of a factor if the trend continues. From 1979-2007, 10,000 to 18,000 migrant cranes have been reported south of Michigan (Indiana, Tennessee, Georgia and Florida) during the census period (Kelly unpubl annual reports). The number of cranes from Michigan in these states at the date of the census is unknown but it could be significant.

Some staging areas in southern Michigan had no coverage (e.g. 108 cranes at Shiawassee National Wildlife Refuge, Dombroski 2007) were not included in the original fall census. There were no reports of cranes from Berrien and Van Buren Counties but it is reasonable to expect there were cranes present in these two counties since nearby counties had several hundred.

Seventeen counties that did not report until 2004 accounted for 25 percent of the total state population index during 2004-08. It is likely that cranes were staging in at least some of four counties with large numbers of cranes (Allegan, Barry, Cass and Kalamazoo) before 2004. It is unknown how many of the remaining 13 counties were missed during the survey before 2004. Part of the large population increase noted during the last five years of the survey can be attributed to incomplete coverage in prior years.

Volunteers were urged to make counts on the last Friday in October or the closest date possible. Most counts were conducted on the same date, but a few were completed on other days. Consequently, some cranes may have moved from one area to another and counted twice. To minimize overestimating the population, counts further north were not accepted unless they were made after the scheduled date (e.g. 402 cranes counted on 27 October 2006 in Missaukee Co. were not included because the scheduled date that year was 30 October. The 175 seen 3 November were accepted). It was assumed that cranes would move south rather than reverse migration that late in the year. Although uncommon, reverse migration has been documented in other areas (Stahlecker 1992).

Several other factors affected the accuracy of the census. Occasionally, volunteers assigned to an area were unable to count (e.g. Cass Co 2006; parts of Allegan and Livingston Counties, 2008). Many of the counts were made at feeding areas and may have missed cranes that were widely dispersed away from night roosts. Abnormal rainfall (drought or flooding) and hunting caused cranes to disperse from traditional roosts to other locations that may have had no observers. Visibility was reduced at some of the roosts because of interfering vegetation, hilly topography and fog. Inexperience counting cranes, especially when several large flocks return to a roost at one time, probably affected accuracy on a few occasions.

The extent these factors affected the accuracy of the census is not known, but most of them would cause an underestimate of the Michigan population. A survey taken during the 1987 breeding season indicated there were at least 2035 cranes in the LP (Hoffman 1989). During the same year, the fall population index of 2906 (Table 1) not only included LP cranes but also an unknown number from eastern UP and Ontario. In addition, the Michigan fall survey does not include UP cranes migrating through Wisconsin. After considering factors affecting accuracy and other estimates, I suspect there presently are about 15,000 to 20,000 cranes in Michigan during late autumn.

Autumn surveys are useful for documenting population trends and distribution of cranes in Michigan, especially when averaged over several years. Care should be taken when comparing population changes from one year to the next because of a considerable variation between successive years. The 11.1% per year rate of increase reported here is within the range of Breeding Bird Survey route that reported increases during 1966-2007 of 13.9% per year in Michigan, 30.3 % in Ontario, and 7.8 % in Wisconsin (Sauer et al. 2008). If the recent increase in the number of staging areas continues, the autumn census will require additional personnel, but still far less than the number needed to conduct surveys during the breeding season.

Acknowledgements

The fall survey in Michigan could not have been possible without the help of numerous people who volunteered their time to participate in the censuses. Hubert Zernickow and Gary Siegirst provided records of weekly autumn counts at Haehnle Sanctuary. I would like to thank Matt Haynes and Joan Hoffman and two anonymous reviewers for their beneficial comments of earlier drafts of the manuscript.

Literature Cited

- Boyd, M., S. Petrie, S. Badzinski, and T. Bamey. 2008. *Movement patterns, habitat use and landowner opinion of a rapidly expanding Sandhill Crane population in Central Ontario*. (On-line), Bird Studies Etudes D'Oiseaux Canada. Accessed 29 January 2009 at <http://www.bsc-eoc.org/reseach/lpwwrf/index.jsp?lang=EN&targetpg=lpwwrfcranestudy>
- Brewer, R., G.A. McPeck, and R.J. Adams Jr. 1991. *The Atlas of Breeding Birds of Michigan*. Michigan State Univ. Press. East Lansing.
- Chartier, A. 2002. Michigan bird survey autumn 2002 (Aug–Nov). *Michigan Birds and Natural History* 9:93-121.
- _____. 2003. Michigan bird survey autumn 2003 (Aug–Nov). *Michigan Birds and Natural History* 10:57-90.
- Dombroski, L.J. 2007. Michigan bird survey autumn 2006 (1 August –30 November). *Michigan Birds and Natural History* 14:55-83.
- Hoffman, R.H. 1989. Status of the Sandhill Crane population in Michigan's Lower Peninsula, 1986-87. *The Jack-Pine Warbler*. 67:18-28.
- _____. 2004. Spring arrival and fall departure dates of Sandhill Cranes in southern Michigan, 1857-2004. *Michigan Birds and Natural History*. 11:175-184.
- Lovvorn, J.R. 1980. Behavior and Habitat of Greater Sandhill Cranes Migrating through Indiana. M.S. thesis. Purdue Univ., W. Lafayette, IN. 120 pp.
- _____. and C.M. Kirkpatrick. 1981. Fall census of Eastern Greater Sandhill Cranes. *In Proceedings 1981 Crane Workshop*. 259-265.
- Sauer J.R., J.E. Hines, and J. Fallon. 2008. *The North American Breeding Bird Survey, Results and Analysis 1966-2007*. Version 5.15. USGS Patuxent Wildlife Research Center. Laurel, MD.
- Stahlecker, D.W. 1992. Crane migration in northern New Mexico. *In Proceedings 1988 N.A. crane workshop*. 1-7.
- Tebbel, P.D. 1981. The status, distribution and nesting ecology of Sandhill Cranes in the Algoma District of Ontario. M.S. thesis. Univ. of Western Ontario. London. 66 pp.
- Urbanek, R.J. 1990. Behavior and survival of captive-reared juvenile Sandhill Cranes introduced by gentle release into a migratory flock of



Sandhill Cranes. Final Rpt., Ohio Coop. Fish Wildl. Res. Unit, Columbus. 98 pp.

Walkinshaw, L.H. 1949. *The Sandhill Cranes*. Cranbrook Institute of Science, Bloomfield Hills, MI. 202 pp.

_____. and R.H. Hoffman. 1974. Southern Michigan Sandhill Crane survey, 1971-1973. *Jack-Pine Warbler* 52:103-114.

_____. and H.F. Wing. 1955. Censusing southern Michigan Sandhill Cranes. *Auk* 72:374-384.



Table 1. Autumn population indices for Sandhill Cranes in Michigan, 1979-2008.

County	1979	1980	1981	1982	1983	1984	1985	1986	1987	1988	1989	1990	1991
Upper Peninsula													
Menominee												60	187
Schoolcraft													7
Northern Lower Peninsula													
Missaukee													
Montcalm													
Oceana			16						57		1		
Ogemaw													
Southern Lower Peninsula													
Allegan													
Barry													
Branch													
Calhoun													
Baker Sanctuary	130	117	245	490	332	490	428	545	538	836	608	761	1407
Cass								1		2			
Clinton													
Genesee													
Gratiot													
Hillsdale													
Jackson													
Haehle Sanctuary	627	1545	760	1036	1376	1257	1206	1583	2311	2497	1709	1522	1458
Kalamazoo													
Lapeer													
Livingston													
Oakland													
Saginaw													
Sanilac													
Shiawassee													
St. Joseph													
Washtenaw													
Unspecified				409									
Michigan Total	757	1662	1021	1935	1708	1747	1634	2129	2906	3335	2318	2343	3059
Michigan 5-year average					1417					2350			
Number of counties	2	2	3	2	2	2	2	3	3	3	3	3	4
Eastern Population^{1,2}	14385	15808	11943	13879	16148	16363	16170	17043	22342	26086	22785	23852	24872

¹ 1979-2002 L.E. Schumann unpubl. reports
² 2003-2008 S. Kelly unpubl. reports
³ N/A - Not Available, count not performed

1992	1993	1994	1995	1996	1997	1998	1999	2000	2001	2002	2003	2004	2005	2006	2007	2008
			2			3	1					2			0	
		38			21			7					0	175	0	
														0	125	
														0	0	50
												386	123	361	137	
												1743	1571	826	1635	1332
													101	81	111	91
													244	776	294	629
984	1367	1314	1846	1100	2500	4336	2986	2885	3863	4774	5328	3609	6754	5948	8528	7292
												465	530	1177	1761	
													6	2	33	0
															200	212
															13	3
													24	144	40	73
												414	703	1745	2337	1385
		410	250	476	278	518	363	145	309	2062	500	1020	1136	553	2219	3623
655	1158	2523	2131	2770	2324	2292	2471	2876	596	2295	2975	2570	921	798	761	776
												471	60	40	65	70
													668	767	1170	455
							23			78	290	578	20	6	65	0
														108	72	103
															30	
													244	34	177	100
													202	115	288	232
													11	314	279	214
			75				86	39	170	121	136					
			977										50			
1639	2937	4125	5507	4148	5363	7123	5715	6116	6691	7768	9956	11252	15191	12866	19074	17747
	2459					5253					7248					15226
2	3	3	5	2	3	4	6	4	3	4	5	12	15	15	20	17
26656	26187	26783	33774	29753	29448	37827	32404	33105	31602	N/A ³	29300	28947	37708	37529	35945	44110

Table 2. Average number of Sandhill Cranes using late autumn staging areas in Michigan, 2004-08.

Area	Location (county, township, range)	Number Cranes
1	Calhoun, 1S 5W Baker Sanctuary	6426
2	Jackson & Washtenaw, 1S 1-3E, 2S 1-2E, 3S 1-3E Haehnle Sanctuary	3467
3	Barry & Kalamazoo, 2N 7-8W, 1N 7-10W, 1S 9-10W	1531
4	Cass, 6S 15W, 7S 15W	982
5	Kalamazoo & St. Joseph, 3S 10-12W, 4S 10-12W, 5S 11W, 6S 9-10W	738
6	Livingston, 4N 5E	478
7	Calhoun & Kalamazoo, 3S 8-9W	465
8	Livingston, 2N 4E, 1N 3E	345
9	Calhoun, 3S 5W	291
10	Allegan, 3N 16W	241
11	Genesee, 6N 8E	206
12	Shiawassee, 5N 1E	138
13	Hillsdale, 5S 2W	125
14	Saginaw, 11N 4E	94
15	Jackson, 3S 2W, 4S 1W	74
16	Branch, 8S 6W	68

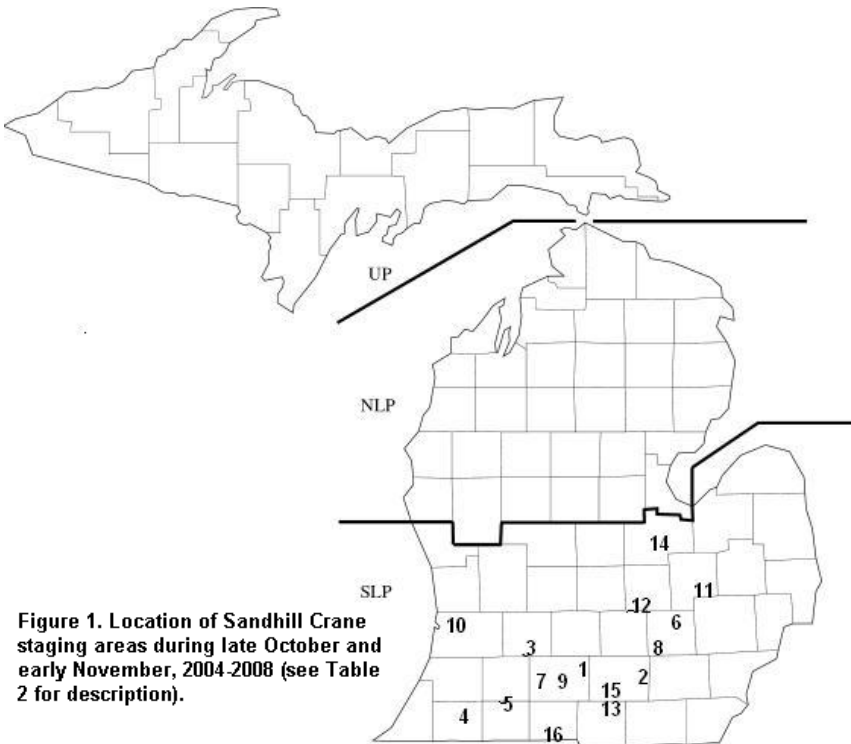


Figure 1. Location of Sandhill Crane staging areas during late October and early November, 2004-2008 (see Table 2 for description).

Michigan Butterfly Survey, 2008

Jack Reinoehl

Hillsdale College

Hillsdale, MI 49242

The year of 2008 for butterflies lacked the strong themes of 2007. A few immigrant species appeared in good numbers. The quantity of reports was improved in the south, but most reports from the northern part of the state came from brief visits.

March was too cold for butterflies, with temperatures three or more degrees below normal in most of the state. During the first week of April, when temperatures reached 60° for the first time in the southern Lower Peninsula, Mourning Cloak, and Eastern Comma were detected. After freezing temperatures almost statewide on 13 April, temperatures increased to 69° by the 16th and remained well above normal the next 10 days. Several species were first detected around the 17th and a few more during the next two weeks. Eleven species of butterflies were reported during April. In May, the first week was warm, encouraging emergence of several species, including a remarkable Common Checkered Skipper. However, most of May was cool and the cool weather delayed emergence dates. The first report of the abundant Clouded Sulphur was not until 17 May, two weeks later than last year. In Lansing, temperatures remained below 70° between 7 May and 24 May. Warm weather finally arrived statewide around 26 May.

May was also somewhat dry in the south, but unlike most recent summers, the state entered the summer season free of drought. (The archive <http://drought.unl.edu/dm/archive.html> allows access to information of this sort for the last decade.) The summer, especially June and July, was wet with temperatures near normal; July was the 16th wettest July on record in the state. The cool dry month of May probably had more effect on butterfly numbers in the south than the wet early summer however. In the southern part of the state, numbers of common butterflies were rather ordinary. One exception was a large mid-summer brood of Pearl Crescent, which appeared throughout southern Michigan in mid-July. The Hillsdale North American Butterfly (NABA) count recorded its highest total of this species in its 14 years, and both the Hillsdale and Gratiot-Saginaw counts had their highest totals since 2002. Another noticeable phenomenon was good numbers of Giant Swallowtails, especially at the northern edge of their range. One was found in Benzie County, well north of any previous sighting

in the state. I observed this swallowtail in locations in Clinton and Gratiot County where I'd not previously seen it. Nielsen (1999) stated that this species has "extended its range northward . . . during the past 50 years" and this trend may be continuing. August was dry and many summer butterflies seemed to disappear rather early; not a single swallowtail of any species was reported in September, in big contrast to the fall of 2007.

Adults fly only in the fall for a few resident butterflies, notably Leonard's Skipper and Common Branded Skipper. Quite a few species have broods in the fall. Immigrant species from the south are usually the most interesting finds in this season however, and there are several species that active searchers are quite likely to find. Numbers of these species were generally down substantially from last year; this trend was perhaps most noticeable for the Fiery Skipper, which was found in only two counties this year, after reports from 7 counties the previous year. Common Buckeye and Common Checkered Skipper were the primary exceptions to this trend, with the latter in particularly good numbers in the southeast.

The first half of September was exceptionally wet, but the rains apparently came too late to cause unusual late broods. There were 16 species of butterflies found in October of 2008, compared to 24 in 2007. November was impressive, however, with 8 species found during the first week when temperatures exceeded 70° in southern Michigan for 4 consecutive days. The most notable of these was a Common Checkered Skipper. The last butterflies were reported on 7 Nov; a day later, a trace of snow was reported in Lansing and the high temperature was 40°. Temperatures only surpassed 50° on two days during the rest of the month.

This was the fifth year of the survey; the cumulative count of species remains at 119. Of the 119, 75 species have been reported every year and 17 more every year but one. On the other hand, 9 species have been reported only once and ten species twice. Thus it is not surprising that the yearly total has varied little, from the mid-90s to just over 100; this year the total was 101. Thanks to Doug McWhirter for compiling reports from the Lansing area this year, leading to very complete coverage from that area. Several reports from NABA Butterfly Counts were also very helpful in providing a wide variety of data for this year's survey.



Observers: Doris Applebaum, Barbara Barton, John Baumgartner, Martin Bialecki, Denny Brooks, Rob Carr, Dave Cuthrell, Pat Deventer, David Dister, Rob and Sue Eggleston, John Farmer, Carl Freeman, Bob Kingsbury, Linda Koning, Steven Kahl*, Roger Kuhlman, Judith Lobato, **Doug McWhirter** (compiler for Lansing area), Marianne McWhirter, John Mills, Steve Mueller*, Karl Ott, Mogens Nielsen, David and Jeff Pavlik, Bill Rapai, Jack Reinoehl, Paul Roose, Russ Schipper, John M. Swales, Lisa Williams

*compiled NABA Count

Species Accounts

Family Papilionidae: Swallowtail Butterflies

Black Swallowtail *Papilio polyxenes*
(SLP – 13, NLP – 0, UP – 1)
Flight period: 29 Apr (Washtenaw) – 17 Aug (Mackinac)
Comment: Reported in the UP from Mackinac.

Giant Swallowtail *Papilio cresphontes*
(SLP – 12, NLP – 1, UP – 0)
Flight period: 20 May (Kalamazoo, Saginaw) – 17 Aug (Gratiot)
Comment: A Giant Swallowtail found in Benzie on 15 Jun by Carl Freeman was well north of any reported in the state by Nielsen (1999); the species also seemed to be more common than usual at the north edge of its regular range, for example in Clinton and Gratiot.

Eastern Tiger Swallowtail *Papilio glaucus*
(SLP – 16, NLP – 0, UP – 0)
Flight period: 3 May (Saginaw) – 17 Aug (Gratiot)

Canadian Tiger Swallowtail

Papilio canadensis
(SLP – 0, NLP – 2, UP – 0)
Reported in late May in Roscommon and Otsego.

Spicebush Swallowtail *Papilio troilus*
(SLP – 14, NLP – 0, UP – 0)
Flight period: 10 May (Washtenaw) – 29 Jun (Allegan)

Family Pieridae: Whites, Sulphurs

Checkered White *Pontia protodice*
(SLP – 1, NLP – 0, UP – 0)
12 Aug in Ingham (Pavlik)

Mustard White *Pieris napi*
(SLP – 1, NLP – 1, UP – 0)
Reported on 4 Jul in Roscommon and 5 Jul in Lapeer

West Virginia White *Pieris napi*
(SLP – 0, NLP – 0, UP – 1)
29 May in Luce (JR)

Cabbage White *Pieris rapae*
(SLP – 20, NLP – 6, UP – 0)
Flight period: 17 Apr (Hillsdale, Kalamazoo) – 5 Nov (Oakland)

Olympia Marble *Euchloe olympia*
(SLP – 0, NLP – 1, UP – 0)
24 May in Osceola (JR)

Clouded Sulphur *Colias philodice*
(SLP – 18, NLP – 3, UP – 1)
Flight period: 17 May (Berrien) – 6
Nov (Hillsdale)

Orange Sulphur *Colias eurytheme*
(SLP – 13, NLP – 2, UP – 2)
Flight period: 25 May (Roscommon)
– 2 Nov (Kalamazoo)

**Family Lycaenidae: Coppers,
Blues, Hairstreaks and Harvesters**

Harvester *Feniseca tarquinius*
(SLP – 0, NLP – 1, UP – 0)
23 May in Leelanau (CF)

American Copper *Lycaena
phlaeas*
(SLP – 8, NLP – 0, UP – 0)
Flight period: 16 Apr (Saginaw) –
11 Sep (Hillsdale)

Bronze Copper *Lycaena hyllus*
(SLP – 5, NLP – 0, UP – 0)
Flight period: 23 Jun (Gratiot) – 5
Oct (Gratiot)

Bog Copper *Lycaena epixanthe*
(SLP - 1, NLP – 0, UP – 0)
29 Jun in Allegan (SM)

Dorcas Copper *Lycaena dorcas*
(SLP – 2, NLP – 0, UP – 0)
Flight period: 9 Jul (Hillsdale,
Lenawee) – 8 Aug (Clinton)

Purplish Copper *Lycaena helloides*
(SLP – 1, NLP – 0, UP – 0)
6 Sep in Washtenaw (JS)

Coral Hairstreak *Satyrium titus*
(SLP – 6, NLP – 0, UP – 0)
Flight Period: 28 Jun (Kent) – 19 Jul
(Oakland)

Acadian Hairstreak *Satyrium
acadium*
(SLP – 2, NLP – 0, UP – 0)
Flight Period: 2 Jul (Saginaw) – 15
Jul (Gratiot)

Edward's Hairstreak *Satyrium
edwardsii*
(SLP – 3, NLP – 0, UP – 0)
Flight Period: 28 Jun (Kent) – 14 Jul
(Oakland)

Banded Hairstreak *Satyrium
calanus*
(SLP – 9, NLP – 0, UP – 0)
Flight period: 29 Jun (Allegan) – 18
Jul (Hillsdale)

Hickory Hairstreak *Satyrium
caryaeorum*
(SLP – 1, NLP – 0, UP – 0)
52 on 2 Jul on the NABA Count in
Saginaw

Striped Hairstreak *Satyrium
liparops*
(SLP – 4, NLP – 0, UP – 0)
Flight Period: 28 Jun (Clinton) – 27
Jul (Ingham)

Brown Elfin *Callophris augustus*
(SLP – 0, NLP – 2, UP – 0)
Flight period: 22 Apr (Otsego) --
11 Jun (Crawford)

Hoary Elfin *Callophris polia*
(SLP – 0, NLP – 0, UP – 1)
23 May in Chippewa (DH)

Eastern Pine Elfin *Callophris
niphon*
(SLP – 0, NLP – 1, UP – 0)
24 May in Otsego (JR)

Western Pine Elf *Callophris eryphon*

(SLP – 0, NLP – 0, UP – 1)
23 May in Chippewa (DH, ph.)

Gray Hairstreak *Strymon melinus*

(SLP – 3, NLP – 0, UP – 0)
Flight period: 29 Jun (*Allegan*) – 6 Sep (*Washtenaw*)

Eastern Tailed Blue *Everes comyntas*

(SLP – 15, NLP – 0, UP – 0)
Flight period: 13 May (*Kalamazoo*) – 25 Sep (*Hillsdale*)

Spring Azure *Celastrina ladon*

(SLP – 9, NLP – 0, UP – 0)
Flight period: 17 Apr (*Ingham*) – 1 Jun (*Clinton*)

Summer Azure *Celastrina neglecta*

(SLP – 13, NLP – 3, UP – 0)
Flight period: 7 Jun (*Lapeer*) – 19 Aug (*Roscommon*)

Northern Spring Azure *Celastrina lucia*

(SLP – 0, NLP – 3, UP – 2)
Flight period: 22 Apr (*Otsego*) – 29 May (*Luce*)

Silvery Blue *Glaucopsyche lygdamus*

(SLP – 1, NLP – 0, UP – 0)
13 May – 20 May in *Kalamazoo* (RS)



The Silvery Blue is an uncommon butterfly seen in the spring and early summer. This one was photographed on 13 May 2008 in Kalamazoo Co. Photo by Russ Schipper.

Melissa “Karner” Blue *Lycaeides melissa*

(SLP – 1, NLP – 0, UP – 0)
29 Jun in *Allegan* (SM)

Family Nymphalidae: Brush-footed Butterflies

American Snout *Libytheana carinenta*

(SLP – 1, NLP – 0, UP – 0)
27 Jul in *Ingham* (DM)

Variiegated Fritillary *Euptoieta claudia*

(SLP – 1, NLP – 0, UP – 0)
16 Aug - 5 Oct in *Kalamazoo* (RS)

Great Spangled Fritillary

Speyeria cybele
(SLP – 16, NLP – 2, UP – 0)
Flight period: 16 Jun (*Kalamazoo*) – 12 Aug (*Hillsdale*)

Aphrodite Fritillary *Speyeria aphrodite*

(SLP – 3, NLP – 1, UP – 0)
Flight period: 28 Jun (*Kent*) – 15 Jul (*Gratiot*)

Atlantis Fritillary *Speyeria atlantis*

(SLP – 0, NLP – 1, UP – 1)
 Flight period: 4 Jul (*Roscommon*) – 19 Jul (*Luce*)

Silver-Bordered Fritillary *Boloria selene*

(SLP – 3, NLP – 0, UP – 0)
 Flight period: 9 Jul (*Lenawee*) – 22 Sep (*Jackson*)

Meadow Fritillary *Boloria bellona*

(SLP – 4, NLP – 1, UP – 1)
 Flight period: 24 May (*Roscommon*) – 4 Aug (*Eaton*)

Silvery Checkerspot *Charidryas nycteis*

(SLP – 1, NLP – 0, UP – 0)
 19 Jun in *Hillsdale* (JR)

Harris' Checkerspot *Charidryas harrisii*

(SLP – 2, NLP – 0, UP – 0)
 Flight Period: 11 Jun (*Gratiot*) – 28 Jun (*Oakland*)

Northern Crescent *Phyciodes pascoensis*

(SLP – 0, NLP – 2, UP – 1)
 Flight period: 28 May (*Roscommon*) – 19 Aug (*Roscommon*)

Pearl Crescent *Phyciodes tharos*

(SLP – 11, NLP – 0, UP – 0)
 Flight period: 18 May (*Eaton*) – 5 Oct (*Gratiot*)

Baltimore *Euphydryas phaeton*

(SLP – 6, NLP – 0, UP – 0)
 Flight period: 6 Jun (*Hillsdale*) – 18 Jul (*Hillsdale*)

Question Mark *Polygonia interrogationis*

(SLP – 7, NLP – 0, UP – 0)
 Flight period: 17 Apr (*Ingham*) – 8 Nov (*Oakland*)

Eastern Comma *Polygonia comma*

(SLP – 11, NLP – 1, UP – 0)
 Flight period: 5 Apr (*Mason*) – 6 Nov (*Hillsdale*)



The Eastern Comma, which hibernates, is often the first species seen in the spring and the last in the fall. The dark hindwings on this individual is characteristic of the summer form. Photographed 29 July 2008 in Macomb Co. Photo by Allen T. Chartier.

Green Comma *Polygonia faunus*

(SLP – 0, NLP – 1, UP – 0)
 22 Apr in *Otsego* (MN)

Gray Comma *Polygonia progne*

(SLP – 3, NLP – 1, UP – 0)
 Flight period: 22 Apr (*Otsego*) – 6 Oct (*Hillsdale*)

Mourning Cloak *Nymphalis antiopa*

(SLP – 13, NLP – 2, UP – 1)
 Flight period: 2 Apr (*Clinton*) – 6 Nov (*Eaton*)



Milbert's Tortoiseshell *Nymphalis milberti*

(SLP – 2, NLP – 0, UP – 3)
Flight period: 6 Jun (Hillsdale) – 31 Aug (Delta)

Compton's Tortoiseshell *Nymphalis vau-album*

(SLP – 0, NLP – 0, UP – 1)
27 Jul in Ontonagon (RS)

Red Admiral *Vanessa atalanta*

(SLP – 11, NLP – 0, UP – 1)
Flight period: 17 Apr (Ingham) – 18 Sep (Kalamazoo)

American Lady *Vanessa virginensis*

(SLP – 8, NLP – 1, UP – 0)
Flight period: 22 Apr (Otsego) – 12 Oct (Eaton)

Painted Lady *Vanessa cardui*

(SLP – 7, NLP – 0, UP – 0)
Flight period: 19 Jun (Hillsdale) – 25 Sep (Hillsdale)

Common Buckeye *Junonia coenia*

(SLP – 8, NLP – 0, UP – 1)
Flight period: 15 Jun (Ingham) – 6 Nov (Hillsdale)

Red-spotted Purple *Limenitis arthemis*

(SLP – 12, NLP – 1, UP – 2)
Flight period: 5 Jun (Hillsdale, Clinton) – 19 Aug (Roscommon)

Viceroy *Limenitis archippus*

(SLP – 13, NLP – 1, UP – 1)
Flight period: 28 May (Gratiot) – 8 Oct (Kalamazoo)

Hackberry Emperor *Asterocampa celtis*

(SLP – 6, NLP – 0, UP – 0)
Flight period: 10 Jun (Washtenaw) – 28 Aug (Eaton)
Comment: In Saginaw on 2 July, 14 were counted.

Tawny Emperor *Asterocampa clyton*

(SLP – 4, NLP – 0, UP – 0)
Flight period: 25 Jun (Lenawee) – 9 Jul (Hillsdale)
Comment: As in 2007, found north to Saginaw.

Northern Pearly Eye *Enodia anthedon*

(SLP – 9, NLP – 2, UP – 2)
Flight period: 28 Jun (Kent) – 18 Jul (Hillsdale)

Eyed Brown *Satyroides eurydice*

(SLP – 13, NLP – 1, UP – 1)
Flight period: 31 May (Clinton) – 31 Jul (Macomb)

Appalachian Brown *Satyroides appalachia*

(SLP – 9, NLP – 0, UP – 0)
Flight period: 28 Jun (Oakland, Kent) – 31 Jul (Macomb)

Mitchell's Satyr *Neonympha mitchellii*

(SLP – 1, NLP – 0, UP – 0)
30 Jun in Kalamazoo (RS).

Little Wood Satyr *Megisto cymela*

(SLP – 13, NLP – 0, UP – 0)
Flight period: 24 May (Kalamazoo) – 13 Jul (Hillsdale)

Common Ringlet *Coenonympha inornata*

(SLP – 4, NLP – 0, UP – 1)
 Flight period: 24 May (Oakland) – 6 Aug (Ingham)

Comment: The report from *Ingham* suggests that the westward range expansion of the southeastern Michigan population continues.

Common Wood Nymph

Cercyonis pegala
 (SLP – 13, NLP – 1, UP – 0)
 Flight period: 28 Jun (Oakland, Ingham) – 9 Aug (Clinton, Gratiot)

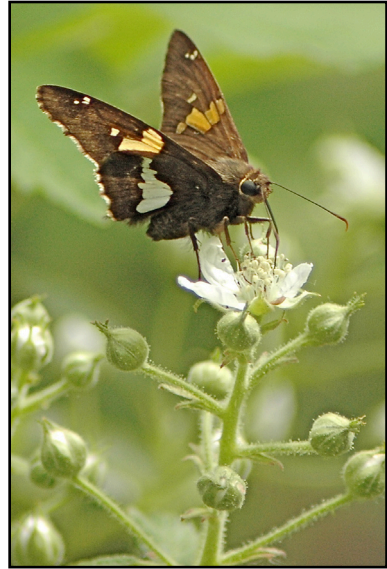
Chryxus Arctic *Oeneis chryxus*
 (SLP – 0, NLP – 1, UP – 0)
 24 May in Otsego (JR)

Monarch *Danaus plexippus*
 (SLP – 22, NLP – 4, UP – 2)
 Flight period: 10 May (Hillsdale) – 31 Oct (Kalamazoo)

Family Hesperiiidae: Skippers

Silver-spotted Skipper
Epargyreus clarus
 (SLP – 19, NLP – 1, UP – 0)
 Flight period: 15 May (Hillsdale) – 19 Sep (St. Clair)

Comment: An individual was photographed on 11 Jun in Crawford; the species was not reported in that county in Nielsen (1999).



The Silver-spotted Skipper is common in the southern LP but quite scarce to the north. This individual was photographed on 11 June 2008 in Crawford County for a possible first county record. *Photo by Bill Rapai.*

Hoary Edge *Achalarus lyciades*
 (SLP – 1, NLP – 0, UP – 0)
 8 Jun in Eaton (DM).

Southern Cloudywing *Thorybes bathyllus*
 (SLP – 3, NLP – 0, UP – 0)
 Flight period: 14 Jun (Oakland) – 28 Jun (Kent)

Northern Cloudywing *Thorybes pylades*
 (SLP – 1, NLP – 0, UP – 0)
 29 Jun in Allegan (SM)



Dreamy Duskywing *Erynnis icelus*

(SLP – 4, NLP – 1, UP – 0)
 Flight period: 11 May (Ingham) – 1 Jun (Clinton)

Sleepy Duskywing *Erynnis brizo*
 (SLP – 4, NLP – 0, UP – 0)
 Flight period: 5 May (Hillsdale) – 1 Jun (Clinton)

Juvenal's Duskywing *Erynnis juvenalis*
 (SLP – 3, NLP – 1, UP – 0)
 Flight period: 5 May (Hillsdale) – 19 June (Hillsdale)

Wild Indigo Duskywing *Erynnis baptisiae*
 (SLP – 4, NLP – 0, UP – 0)
 Flight period: 17 Jul (Hillsdale) – 10 Oct (Oakland)

Comment: This species was reported from a couple locations in Clinton; it was not reported in that county in Nielsen (1999). The expansion of this duskywing is due to the spread of a host plant, the exotic Crown Vetch (*Coronilla varia*), now found widely along roadsides in southern Michigan.

Common Checkered Skipper *Pyrgus communis*
 (SLP – 12, NLP – 0, UP – 0)
 Flight period: 7 May (Washtenaw) – 5 Nov (Washtenaw)

Comment: Among regular southern species, this made by far the most impressive showing. Usually it is quite scarce before August, but this year, besides the extraordinary May sighting, it was found on 15

Jun in Kalamazoo and in Ingham and Hillsdale in July. The highest number reported was 10 on 6 Sep in Washtenaw.

Common Sootywing *Pholisora catullus*
 (SLP – 6, NLP – 0, UP – 0)
 Flight period: 26 May (Ingham) – 23 Aug (Hillsdale)

Arctic Skipper *Carterocephalus palaemon*
 (SLP – 1, NLP – 2, UP – 0)
 Flight period: 28 May (Roscommon) – 14 Jun (Clinton)

Comment: Rose Lake Wildlife Management Area in Clinton appears to be the exact southern edge of the species' range in south central Michigan.

Least Skipper *Ancyloxypha numitor*
 (SLP – 9, NLP – 1, UP – 0)
 Flight period: 1 Jun (Clinton) – 27 Sep (Hillsdale)

European Skipper *Thymelicus lineola*
 (SLP – 6, NLP – 0, UP – 3)
 Flight period: 8 Jun (Eaton, Kalamazoo) – 27 Jul (Ingham)

Fiery Skipper *Hylephila phyleus*
 (SLP – 2, NLP – 0, UP – 0)
 Reported on 20 Sep in Wayne and 25 Sep in Oakland.

Leonard's Skipper *Hesperia leonardus*
 (SLP – 2, NLP – 0, UP – 0)
 Reported in August in Ottawa and on 6 Sep in Washtenaw.

Indian Skipper *Hesperia sassacus*
(SLP – 3, NLP – 0, UP – 0)
Flight period: 5 Jun (Oakland) – 28
Jun (Kent)

Peck's Skipper *Polites coras*
(SLP – 10, NLP – 0, UP – 0)
Flight period: 31 May (Ingham,
Eaton) – 24 Sep (Oakland)
Comment: In this year of generally
small numbers of most species, over
100 were counted on 12 August in
Oakland.

Tawny-edged Skipper *Polites
themistocles*
(SLP – 5, NLP – 0, UP – 0)
Flight period: 7 June (Eaton) – 26
Aug (Washtenaw)

Crossline Skipper *Polites origenes*
(SLP – 4, NLP – 0, UP – 0)
Flight period: 28 Jun (Oakland) –
19 Jul (Oakland)

Long Dash *Polites mystic*
(SLP – 0, NLP – 1, UP – 0)
4 Jul in Roscommon (JR)

Northern Broken Dash
Wallengrenia egeremet
(SLP – 4, NLP – 0, UP – 0)
Flight period: 2 Jul (Saginaw) – 18
Jul (Hillsdale)

Little Glassywing *Pompeius verna*
(SLP – 9, NLP – 0, UP – 0)
Flight period: 28 Jun (Eaton, Kent) –
18 Jul (Hillsdale)

Delaware Skipper *Atrytone
delaware*

(SLP – 10, NLP – 0, UP – 0)
Flight period: 24 Jun (Kalamazoo) –
18 Jul (Hillsdale)

Mulberry Wing *Poanes massasoit*
(SLP – 4, NLP – 0, UP – 0)
Flight period: 30 Jun (Kalamazoo) –
24 Jul (Clinton)

Hobomok Skipper *Poanes
hobomok*
(SLP – 8, NLP – 2, UP – 1)
Flight period: 24 May (Kalamazoo)
– 4 Jul (Roscommon)

Broad-winged Skipper *Poanes
viator*
(SLP – 3, NLP – 0, UP – 0)
Flight period: 6 Jul (Gratiot) – 9
Aug (Clinton)

Dion Skipper *Euphyes dion*
(SLP – 1, NLP – 0, UP – 0)
6 – 15 Jul in Gratiot (JR) where 7
were counted on the earlier date.

Black Dash *Euphyes conspicua*
(SLP – 2, NLP – 0, UP – 0)
Flight period: 6 Jul (Gratiot) – 24
Jul (Hillsdale)

Dun Skipper *Euphyes ruricola*
(SLP – 6, NLP – 0, UP – 0)
Flight period: 2 Jul (Saginaw) – 2
Aug (Oakland)

Common Roadside Skipper
Amblyscirtes vialis
(SLP – 2, NLP – 0, UP – 0)
20 May in Kalamazoo and 27 Jul in
Ingham.

References

Nielsen, M. C., 1999. *Michigan Butterflies and Skippers, A Field Guide and Reference*. Michigan State University.

Michigan Bird Survey: Autumn 2008 (August-November)

Adam M. Byrne
11771 Rachel Lane
DeWitt, MI 48820

A total of 317 species was reported during the Autumn 2008 season by 374 observers.

August was dry across most of the state. September was very wet in the Lower Peninsula, much of which was due to the remnants of tropical systems Lowell and Ike. October was cool and dry statewide. By late November winter had arrived in full force in the Upper Peninsula; most of the region was covered in snow by the month's end. November started warm but finished very cold in the Lower Peninsula.

Migration was noted as rather uneventful statewide. Warbler and sparrow numbers were especially low, with sparrows arriving later and in much reduced numbers compared to last fall. White-winged Crossbills and Pine Siskins started a major movement into Michigan that was not truly appreciated until sometime during the winter months. White-winged Crossbills, especially, moved south of normal during the late fall; there were reports from 17 Lower Peninsula counties, contrasted with a meager five counties statewide in Autumn 2007.

The most noteworthy rarities were Black-bellied Whistling-Duck, Ross's Goose, Brant, King Eider, Pacific Loon, Western/Clark's Grebe, Magnificent Frigatebird (plus an unidentified frigatebird), Glossy/White-faced Ibis, Black Vulture, Swallow-tailed Kite, Western Sandpiper, Ruff, Red Phalarope, Black-headed Gull, California Gull, Ancient Murrelet, White-winged Dove, Green Violetear, Rufous Hummingbird, American Three-toed Woodpecker, Say's Phoebe, Lark Sparrow, Nelson's Sparrow, and Smith's Longspur.

Abbreviations (County names in *italics*):

ad(s). = adult(s)

ASGA = Allegan State Game Area, *Allegan*

BCSRA = Bay City State Recreation Area, *Bay*

DNR = Department of Natural Resources

DRHW = Detroit River Hawk Watch

FFM = First Fall Migrant(s)

HRT = Highest Reported Total

imm(s). = immature(s)

juv(s). = juvenile(s)

LEMP = Lake Erie Metropark, *Wayne*

LRD = Last Reported Date

MBRC = Michigan Bird Records Committee

MWS = Muskegon Wastewater System, *Muskegon*

m.ob. = many observers

NLP = Northern Lower Peninsula

p.a. = pending acceptance

PM = Pointe Mouillee State Game Area, *Monroe*

SBA = Saginaw Bay Area

SGA = State Game Area

SLP = Southern Lower Peninsula

SNWR = Shiawassee National Wildlife Refuge, *Saginaw*

SRA = State Recreation Area

TP = Through Period

TPSP = Tawas Point State Park, *Iosco*

Twp. = Township

UP = Upper Peninsula

WPBO = Whitefish Point Bird Observatory, *Chippewa*

Numbers in parentheses following each species name refer to the number of counties reporting from the UP, NLP, and SLP, respectively. If a species was reported from all 83 counties, the numbers would be (15,33,35). Species that are accidental, casual, or otherwise noteworthy are in all CAPS.

SPECIES ACCOUNTS

BLACK-BELLIED WHISTLING-DUCK

(0,0,1) Quite surprising was 1 on 29 Sep-1 Oct visiting a waterfowl banding bait station at SNWR (DJP, DEP), representing the 2nd state record and first for *Saginaw*; accepted by MBRC.

Greater White-fronted Goose

(2,0,3) FFM – 1 on 14 Sep at WPBO. Other reports were 1 on 21 Oct at LEMP (WGP); 1 on 27 Oct in *Allegan* (RB); 2 on 15 Nov at Cleveland Cliffs Basin, *Alger* (SCH, GC, BF); and 1 on 22 Nov at New Buffalo, *Berrien* (AV, DVi).

Snow Goose (5,3,11) FFM – 2 on 15 Sep in Hampton Twp., *Bay* (DD). Other NLP reports came from *Clare* (1 on 18 Sep-7 Oct, ES) and *Isabella*. LRD/HRT – 17 on 28 Nov at SNWR (DJP). The only other high count was 10 on 27 Oct in *Allegan* (RB). A bird from summer-3 Aug at Galien Sewage Ponds (JTW, m.ob.) was the first Aug record for *Berrien*.

ROSS'S GOOSE (2,0,1) An ad. with 4 intermediate-appearing juvs. visited the Calumet Sewage Ponds, *Houghton* on 16 Sep (LCB, MHe); only the ad. was accepted by the MBRC. Also accepted by the MBRC were 2 on 22 Oct in *Allegan* (RB). 1 on 14 Oct at Copper Harbor, *Keweenaw* (LCB) is still p.a.

[Snow Goose x Ross's Goose]

(1,0,0) A bird clearly intermediate between Snow and Ross's Goose

was at Grand Marais, *Alger* on 4 Oct (SCH).

BRANT (0,0,1) A juv. on 1 Nov at Grand Haven, *Ottawa* (CF) was accepted by the MBRC.

Cackling Goose (6,1,15) FFM – 1 on 6-8 Sep and HRT – 43 on 28 Sep, both at Peninsula Point, *Delta* (SH). LRD – 4 on 16 Nov in *Washtenaw* (DoC). The lone NLP report was 11 on 10 Nov at the Middlegrounds, *Bay* (LD).

Canada Goose (15,26,34) HRT – 9000 on 13 Oct at MWS (JPo, GW).

Mute Swan (5,16,34) HRT – 400 on 1 Aug in *St. Clair* (FG); 241 on 20 Sep at PM (AMB); and 228 on 25 Nov in Brownstown Twp., *Wayne* (WGP). 120 on 23 Nov at Pointe La Barbe, *Mackinac* (SBa) was noteworthy for the UP.

Trumpeter Swan (2,9,10) HRT – 21 on 15 Nov at Cleveland Cliffs Basin, *Alger* (SCH, GC, BF). Other UP sightings were 4 on 17 Aug at Cleveland Cliffs Basin, *Alger* (SCH); 6 on 13 Oct at Doe Lake, *Alger* (JHo); and a report from *Schoolcraft*.

Tundra Swan (4,6,22) An ad. on 8 Sep at LEMP (WGP) most likely summered locally. HRT – 2583 on 26 Nov at PM (AMB). UP reports were 2 on 16-17 Oct at Baraga, *Baraga* (DP, LCB); 1 on 18 Oct at WP; 400+ on 2 Nov at Rabar, *Chippewa* (SBa); an imm. on 1 Nov



and 2 ads. with 3 juvs. on 13 Nov at Munising, *Alger* (SCH); 62 on 13 Nov at Parent Lake, *Baraga* (BO, DeH); 100 on 14 Nov at South Republic, *Marquette* (fide SH); 56 on 14 Nov at Keweenaw Bay, *Baraga* (ED); and 200+ on 23 Nov at Dunbar, *Chippewa* (SBa)

Wood Duck (13,18,30) HRT – 160 on 4 Sep at SNWR (DJP) and 94 on 4 Aug at PM (AMB). LRD – a male shot by a hunter on 24 Nov at Shiawassee River SGA, *Saginaw* (fide DEP).

Gadwall (6,6,18) HRT – 200 on 25 Oct at MWS (JPo) and 158 on 14 Oct at South Haven, *Van Buren* (RS).

American Wigeon (8,5,15) HRT – 700+ on 11 Oct at Tobico Marsh, *Bay* (RD). WPBO recorded 846 from 29 Aug-20 Oct with max of 134 on 10 Oct.

American Black Duck (11,17,24) HRT – 543 on 31 Oct at SNWR (DJP).

Mallard (14,22,34) HRT – 10,865 on 24 Nov at SNWR (DJP).

Blue-winged Teal (9,9,20) HRT – 200 on 19 Aug at PM (ATC) and 158 on 4 Sep at SNWR (DJP). WPBO recorded 290 from 20 Aug-10 Oct with max of 84 on 23 Aug. LRD – 18 on 15 Nov at Crystal Lake, *Dickinson* (EJO, GRO) and 2 on 8 Nov at MWS (JoL).

Northern Shoveler (4,4,19) FFM – 38 on 28 Aug at SNWR (DJP).

HRT – 4000 on 6 Nov and 3000 on 29 Oct at MWS (JPo). 260+ on 7 Oct at Dow Ponds, *Midland* (MKE) was a new Saginaw Bay Area fall high count. Other NLP reports came from *Bay, Iosco, Midland* (still 40 present on 30 Nov at Dow Ponds, MKE), and *Roscommon*. UP reports came from *Chippewa, Houghton, Keweenaw, and Schoolcraft*.

Northern Pintail (5,5,14) 1 on 12 Sep in *Washtenaw* (BAr) was very early. HRT – 500 on 30 Oct at Nayanquing Point, *Bay* (RD, MHa).

Green-winged Teal (8,13,21) HRT – 1139 on 9 Oct at SNWR (DJP). WPBO recorded 600 from 23 Aug-27 Oct with max of 85 on 28 Sep. LRD – 3 on 30 Nov at Dow Ponds, *Midland* (MKE).

Canvasback (3,4,15) A female on 2-4 Sep at Calumet Sewage Ponds, *Houghton* (SJ, LCB) was the earliest fall record ever for Keweenaw Peninsula. A summering bird at PM was present to at least 30 Aug (AMB). HRT – 250 on 22-26 Nov at Belle Isle, *Wayne* (ATC). In the UP, there was also a male on 25 Oct-14 Nov at *Marquette, Marquette* (RR, JA, SH) and a report from *Mackinac*. NLP sightings were in *Alcona, Bay, Midland, and Wexford*.

Redhead (6,10,22) HRT – 3650 on 15 Nov at Douglas Drive, *Iosco* (REr) and 3000+ on 24 Oct and 2000+ on 30 Sep at St. Ignace, *Mackinac* (SBa).

Ring-necked Duck (8,12,20) FFM – 2 on 20 Sep at PM (AMB). HRT – 1725 on 16 Oct (EJO, GRO), with at least 1000 remaining on 18 Oct (GC) at Crystal Lake, *Dickinson*; 1212 on 3 Nov at ASGA (RB); and 934 on 31 Oct at SNWR (DJP).

Greater Scaup (3,10,12) HRT – 1436 on 26 Nov at PM (AMB). WPBO recorded 559 from 4 Sep-2 Nov with a max of 206 on 10 Oct. Other UP reports came from *Alger* and *Mackinac*.

Lesser Scaup (5,8,22) HRT – 200 on 4 Nov at Belle Isle, *Wayne* (ATC); 183 on 20 Oct in *Allegan* (RB); 180 on 20 Oct at South Haven, *Van Buren* (RB); 135 on 1 Nov at Tiscornia, *Berrien* (AV, DVi); 110 on 1 Nov at Douglas, *Allegan* (RB, AL); and 103 on 26 Nov at PM (AMB). WPBO recorded 623 from 25 Aug-1 Nov with a max of 146 on 8 Oct.

KING EIDER (0,0,1) 1 on 21-22 Nov at Belle Isle, *Wayne* (NC) was only the 2nd county record; accepted by MBRC.



This immature male King Eider was only the second ever for Wayne County and the first for Belle Isle, when found and photographed on 21 November 2008. Photo by Nathan Crawford.

Harlequin Duck (1,2,1) An ad. male on 28 Oct-7 Nov at outlet from Ludington Pumped Storage Reservoir, *Mason* (DCD); 1 on 31 Oct at WP; a female on 2-30 Nov at Pere Marquette Park, *Marquette* (m.ob.); and a female on 26-29 Nov at Manistee, *Manistee* (MJ, TG)

Surf Scoter (5,3,7) WPBO recorded 339 from 9 Sep-8 Nov with a max of 123 on 28 Sep. 2 on 26 Oct-13 Nov at Cavanaugh Lake, *Washtenaw* (m.ob.) were noteworthy for this inland location. NLP reports came from *Alcona*, *Alpena*, and *Bay* (10 on 19 Oct with 8 remaining thru 31 Oct and 2 to 14 Nov at BCSRA, LD).

White-winged Scoter (3,4,9) FFM – 1 on 8 Sep at Shelter Bay, *Alger* (SCH). Other UP reports came from *Chippewa* (2198 from 24 Aug-15 Nov with a max of 434 on 28 Sep at WP) and *Mackinac*. NLP reports were 9 on 11 Oct (CFr) and 255 on 1 Nov (CFr, DC) at Point Betsie, *Benzie*; 2 on 31 Oct, 4 on 14 Nov, and 1 on 15 Nov at BCSRA (LD); 36 on 1 Nov and 14 on 22 Nov at Big Sable Point, *Mason* (DCD, TG); and 21 on 1 Nov at Esch Rd., *Leelanau* (AVZ). 1 on 12 Nov at Portage Lake, *Washtenaw* (RW) was the only inland report.

Black Scoter (5,3,8) HRT – 35 on 1 Nov at Tiscornia, *Berrien* (AV, DVi) and 22 on 26 Oct (RB), 19 on



1 Nov (RB, AL), and 20 on 8 Nov (SMi) at Douglas, *Allegan*. LRD – 8 at Muskegon, *Muskegon* (m.ob.) and 1 at South Haven, *Van Buren* (m.ob.) on 22 Nov. WPBO recorded 93 from 13 Sep-11 Nov with a max of 16 on 28 Oct. NLP reports were 3 on 10 Oct at Finn Rd. Park, *Bay* (JSo); 3 on 19 Oct, 10 on 6-11 Nov, and 9 on 14 Nov at BCSRA (LD); and 4 on 4 Nov at TPSP (JSo).

Long-tailed Duck (3,6,11) HRT – 4200 on 22 Nov at Manistee, *Manistee* (BA, BP, EH). WPBO recorded 4486 from 29 Sep-15 Nov with a max of 699 on 7 Nov. Other UP reports came from *Alger* and *Mackinac*. 1 on 21 Oct at Lake Lansing, *Ingham* (BCo) was noteworthy.

Bufflehead (5,18,26) FFM – 1 on 22 Sep at MWS (JPo) was very early for the SLP. HRT – 200 on 9 Nov at Midland, *Midland* (MKE) and 103 on 4 Nov at MWS (JPo). WPBO recorded 612 from 20 Aug-19 Nov with a max of 193 on 28 Oct.

Common Goldeneye (3,16,18) HRT – 661 on 26 Nov at PM (AMB). UP reports came from *Alger*, *Chippewa* (484 from 22 Aug-15 Nov with a max of 80 on 28 Oct at WP), and *Mackinac*.

Hooded Merganser (12,14,24) HRT – 224 on 15 Nov at Crystal Lake, *Dickinson* (EJO, GRO).

Common Merganser (8,18,15) HRT – 1500+ on 30 Nov at Midland Cogeneration Venture Ponds, *Midland* (MKE).

Red-breasted Merganser (7,13,16) 5430 from 19 Aug-19 Nov with a max of 1325 (HRT) on 20 Oct at WP. The next highest total was 801 on 22 Nov at Douglas, *Allegan* (RB, AL).

Ruddy Duck (0,5,19) HRT – A mind-boggling 15,000 on 18 Oct and 10,000 on 2 Oct at MWS (JPo). The northernmost report came from *Alcona*.

Ring-necked Pheasant (1,6,31) HRT – up to 20 TP in Casco Twp., *St. Clair* (REE); 16 on 20 Oct at Verona SGA, *Huron* (CMS); and 13 on 31 Oct at SNWR (DJP). The lone UP report came from *Menominee*.

Ruffed Grouse (8,13,5) HRT – 7 on 14 Nov near Cooke Dam, *Iosco* (WWS); 6 on 29 Nov at Allouez, *Keweenaw* (NA); and 4 on 30 Aug at Race Road, *Dickinson* (JAM). The southernmost report came from *Berrien*.

Spruce Grouse (5,0,0) A female with 4 young on 8 Sep at Pike Lake, *Luce*; 5 on 23 Sep near Gwinn, *Marquette* (RH) was unusual; 3 on 4-5 Oct (PRe) and 1 on 26 Oct (SG) at WP; 2 females on 4 Oct and a male on 5 Oct at Craig Lake SP, *Baraga* (DP); 4 on 17-19 Oct

at Sleeper Lake Burn, *Luce* (JP, DP); and 4 on 27 Nov at Baraga Plains, *Baraga* (JY, LM).

Sharp-tailed Grouse (3,0,0)

Reported from several Chippewa sites with a max of 66 on 29 Nov (SH, JH, MHu). Other reports were 9 on 10 Oct at Brevort Lake, *Mackinac* (RNA); 10 on 24 Oct at Moran, *Mackinac*, and a sighting in *Schoolcraft*.

Wild Turkey (9,20,25) HRT – 88 on 28 Nov at Port Sanilac, *Sanilac* (DFe, REF) and 60 on 10 Nov in *Kalamazoo* (RK). This species continues to spread across the UP, with sightings from *Alger*, *Chippewa*, *Delta*, *Dickinson*, *Iron*, *Mackinac*, *Menominee*, *Ontonagon*, and *Schoolcraft*.

Northern Bobwhite (0,0,10)

Reports of this increasingly difficult to find species came from *Berrien*, *Clinton* (HRT – 25+ on 2 Nov, MPa), *Eaton*, *Gratiot*, *Hillsdale*, *Huron*, *Livingston*, *Kalamazoo*, *Oakland*, and *Tuscola*.

Red-throated Loon (4,2,4) 1 on 29 Aug at Presque Isle Park and 16 on 20 Sep and 1 on 14 Oct at Big Bay Lighthouse, *Marquette* (DP); 278 from 30 Aug-2 Nov with a max of 52 on 16 Sep at WP; 1 on 1 Sep at Black River Harbor, *Gogebic* (SJ); 7 on 14 Sep near Copper Harbor, *Keweenaw* (LCB); 1 on 1 Oct at Ottawa National Forest was found grounded on an inland road and

later released at Langford Lake, *Gogebic* (IS); 3 on 28 Oct (AV, RJ), 5 on 1 Nov (AV, DVi), and 1 on 18 Nov (MH) at St. Joseph, *Berrien*; 1 on 1 Nov at Point Betsie, *Benzie* (CFr, DC); 1 on 1 Nov at Grand Haven, *Ottawa* (CF, CPe); 2 on 4 Nov (JSo) and 1 on 21 Nov (SG, LMA, CSz) at Tawas Bay, *Iosco*; 1 on 11 Nov at Douglas Public Beach, *Allegan* (RB); and lingering birds to at least 29 Nov near New Buffalo, *Berrien* (KM).

PACIFIC LOON (1,0,0) 1 on 31 Oct at Keweenaw Bay, *Baraga* (MHe) was accepted by MBRC.

Common Loon (11,16,13) WPBO recorded 1471 from 19 Aug-15 Nov with a max of 279 on 20 Sep. Early were 4 on 19 Aug at PM (ATC).

Pied-billed Grebe (10,14,27) HRT – 262 on 20 Sep at PM (AMB).

Horned Grebe (4,9,13) HRT – 314 on 28 Sep at Keweenaw Bay, *Baraga* (JY). WPBO recorded 158 from 28 Aug-13 Nov with a max of 27 on 25 Aug. Other UP reports came from *Alger* and *Mackinac* (1 on 23 Sep at Brevort, SBa). 1 on 6 Sep at MWS (SMi) was very early for the SLP.

Red-necked Grebe (5,5,4) WPBO recorded 10,524 from 20 Aug-16 Nov with a max of 1579 on 30 Sep. Two family groups lingered into Aug at Little Bay De Noc, *Delta* (SH). SLP reports came from *Allegan*



(2 on 11 Nov at Douglas Public Beach, RB), *Huron* (1 on 25 Oct at Harbor Beach, KOv, SJ, RE, CC), *Muskegon*, *St. Clair*, and *Wayne* (1 on 26 Nov at LEMP, WGP).

Eared Grebe (0,0,1) 1 on 17-24 Aug (JWi, SMi, ES, m.ob.) and 2 (ad. and imm.) on 2-7 Sep (JPo, CP) at MWS.

AECHEMOPHORUS GREBE (1,0,0) 1 on 29 Nov at Marquette, *Marquette* (GC) was accepted by the MBRC.

American White Pelican (3,0,3) 20+ in late Aug at Gladstone, *Delta* (MB); 5 on 30 Aug near Bailey Park, *Menominee* (SJ); 1 on 30 Aug at No-see-um Creek, *Delta* (*fide* SH); 1 on 30 Aug at PM (KOv); 6 on 3-7 Sep at Crow Island SGA, *Saginaw* (DD, REr); 4 on 26 Oct at Olivet, *Eaton* (PV); and 1 on 27-29 Nov at Forestville Basin, *Marquette* (SBe) was very late

Double-crested Cormorant (10,17,23) HRT – 1518 on 1 Sep at Ludington, *Mason* (DCD); 1130 on 17 Sep at Nordhouse Dunes, *Mason* (BJ); 1109 on 7 Aug at Pumped Water Storage Plant, *Mason* (BJ, MP); 900 on 30 Sep in Brownstown Twp., *Wayne* (WGP); and 850 on 22 Sep in Hampton Twp., *Bay* (JSo). 1 on 26 Nov at Munising, *Alger* (SH, SCH, ZG) was late for the UP.

MAGNIFICENT FRIGATEBIRD (0,0,1) A male on 26 Sep at St. Joseph, *Berrien* (MH) was accepted

by the MBRC and represents the third state record and first county record.

FREGATA SPECIES (0,1,0) 1 on 20 Sep at Lake Leelanau, *Leelanau* (SB) was accepted by the MBRC and amazingly represents the county's third frigatebird record.

American Bittern (6,3,4) NLP reports were 1 on 2 Aug at Nayanquing Point SRA, *Bay* (DJa); 1 on 16 Aug at Tuttle Marsh, *Iosco* (WWS, REr); 1 on 25 Oct in Hampton Twp., *Bay* (SMa); and a sighting in *Montmorency*. SLP reports came from *Monroe*, *Muskegon*, *Saginaw* (1 on 27 Aug at SNWR, LMA), and *Wayne* (1 on 4 Oct, CB).

Least Bittern (0,0,2) The only reports came from *Monroe* and *St. Clair* (1 on 6 Aug at Harsen's Island, ATC).

Great Blue Heron (6,23,33) HRT – 131 on 6 Sep at PM (AMB).

Great Egret (2,11,27) HRT – 477 on 20 Sep at PM (AMB) and 309 on 14 Aug at SNWR (DJP). LRD – 1 on 28 Nov in Brownstown Twp., *Wayne* (WGP). UP reports were 2 on 5 Sep at Ludington Park, *Delta* (DM) and 1 on 27 Sep at Amadon Pond, *Schoolcraft* (BR).

SNOWY EGRET (0,0,1) At least 1 was present on 19 Aug-20 Sep at PM (m.ob.).

CATTLE EGRET (2,0,0) 1 on 26 Oct at WP. 4 on 4 Nov (DP, SH, GC) with 1 remaining to 8 Nov (JH, MHu) at Marquette, *Marquette*; an additional sighting on 6 Nov at Dead River, *Marquette* (DP, SH) could have been one of the original 4 birds.



This Cattle Egret at Marquette on 4 November 2008 was part of what seemed to be a mini-invasion of the species into the UP this fall. *Photo by Dave Pavlik.*

Green Heron (4,11,24) HRT – 8 on 15 Sep at Chippewa NC, *Midland* (JZi); 7 on 9 Aug at Maple River SGA, *Gratiot* (PD, DMc); and 6 on 2 Sep at Morrison Bayou, *Allegan* (RB). UP reports came from *Alger* (4 on 17 Aug at Cleveland Cliffs Basin, SCH), *Delta*, *Dickinson*, and *Houghton* (imm. on 28 Aug at Calumet Sewage Ponds where rare, LCB). LRD – 1 on 14 Oct at Finn Rd. Park, *Bay* (LD).

Black-crowned Night-Heron (0,2,8) HRT – 20 on 9 Aug at SNWR (DJP). Other reports came from *Bay*, *Genesee*, *Gratiot*, *Macomb*, *Monroe*, *Oakland*, *Ogemaw*, *Washtenaw* (a county record high of 6 on 5 Sep

at State and Textile Rds., *RKu* and *RW*), and *Wayne* (TP with max of 4 on 28 Nov at Gibraltar, WGP).

PLEGADIS IBIS (0,0,1) 1 on 15 Nov in *Allegan* (SM) was accepted by MBRC.

BLACK VULTURE (1,0,1) Singles on 14 Oct at LEMP (LC, PC) and 17 Oct-17 Nov in *Houghton* (GD, MHi, JK) were both accepted by MBRC.

Turkey Vulture (12,21,32) Seasonal total of 69,676 at DRHW was about normal; peak counts were 10,829 on 17 Oct at Pointe Mouillee DNR Headquarters, *Wayne* and 9560 on 16 Oct at LEMP (CB).

Osprey (8,10,11) 151 at DRHW was below average; highest count was 13 on 17 Sep at LEMP (CB). The next highest total was 7 on 21 Sep at Muskegon SP, *Muskegon* (CW). LRD – 2 on 15 Nov at Crystal Lake, *Dickinson* (EJO, GRO).

SWALLOW-TAILED KITE (1,0,0) 1 on 18 Aug at Ewen, *Ontonagon* (NW) was the 6th state and first UP record; accepted by MBRC.

Bald Eagle (12,22,23) HRT – 68 on 24 Nov at SNWR (DJP) was a new SBA fall high count. 195 at DRHW was about average. WP recorded 70 from 19 Aug-11 Nov with a max of 3 on eight dates.

Northern Harrier (9,12,22) 292 at DRHW was well below normal; peak count was 43 on 21 Sep at



Pointe Mouillee DNR Headquarters, Wayne (CB). 23 from 10 Sep-6 Nov with a max of 5 on 22 Sep at Muskegon SP, *Muskegon* (RP, CW, JJ).

Sharp-shinned Hawk (7,11,24) 4728 at DRHW was about half of average; peak counts were 516 on 19 Sep at LEMP and 346 on 21 Sep at Pointe Mouillee DNR Headquarters, Wayne (CB). 519 from 9 Sep-14 Nov with max of 133 on 18 Sep and 147 on 22 Sep at Muskegon SP, *Muskegon* (RP, CW, JJ).

Cooper's Hawk (6,15,28) Below normal were 458 at DRHW; highest count was 33 on 21 Sep at Pointe Mouillee DNR Headquarters, Wayne (CB). 28 from 15 Sep-14 Nov with max of 7 on 22 Oct at Muskegon SP, *Muskegon* (RP, CW, JJ).

Northern Goshawk (8,7,6) 21 from 21 Aug-17 Nov with a max of 2 on 26 Oct and 7 Nov at WP. 12 at DRHW was low, but comparable to recent years.

Red-shouldered Hawk (2,4,10) 328 at DRHW was about a third the seasonal average; highest count was 51 on 22 Oct at Pointe Mouillee DNR Headquarters, Wayne (CB). UP reports were an unusually north bird on 23 Aug at Isle Royale, *Keweenaw* (SH) and 5+ ads. on 1 Nov at Stonington Peninsula, *Delta* (SH, MHe). NLP

reports came from Arenac (1 on 9 Oct at Tyler Plains, DJa), *Grand Traverse*, *Iosco* (1 on 27 Sep near Cooke Dam, WWS, REr), and *Mason*.

Broad-winged Hawk (12,7,13) 321,762 at DRHW was the third highest total ever; peak count was 255,641 on 18 Sep at Pointe Mouillee DNR Headquarters, Wayne (CB). LRD – 1 on 16 Oct in Wayne (CB).

SWAINSON'S HAWK (0,0,1) 5 at DRHW was about average: dark morph on 16 Sep, 2 dark morphs plus another unknown plumage on 18 Sep, and a dark morph juv. on 17 Oct; all at the Pointe Mouillee DNR Headquarters, Wayne (CB).

Red-tailed Hawk (11,18,34) 4003 at DRHW was half of expected total. HRT – 463 on 1 Nov at Pointe Mouillee DNR Headquarters, Wayne (CB).

Rough-legged Hawk (4,15,20) FFM – 3 Oct in Ottawa (CF). 30 at DRHW was low but similar to recent years (CB). 16 from 22 Oct-7 Nov with max of 11 on 23 Oct at Muskegon SP, *Muskegon* (RP, CW, JJ). UP reports were 15 from 7 Oct-12 Nov with max of 3 on 4 Nov at WP; 1 on 8 Oct at Munising, *Alger* (SCH); 1 on 14 Oct at West Iron Mountain Golf, *Dickinson* (EJO, GRO); and 16 (HRT) on 16 Oct near Rudyard, *Chippewa* (SBa).

Golden Eagle (3,0,8) FFM – 1 on 18 Sep at Muskegon SP, *Muskegon* (RP, CW, JJ). 148 at DRHW was best season in some time; HRT – 35 on 1 Nov at Pointe Mouillee SGA DNR Headquarters, *Wayne* (CB). UP reports were an imm. on 31 Oct at Christmas, *Alger* (SCH); ad. on 2 Nov at St. Ignace and 2 imms. on 10 Nov at Nunn's Creek, both *Mackinac* (SBA); and 1 on 14 Nov at Kinross, *Chippewa* (JN).

American Kestrel (8,12,28) 795 at DRHW was quite low. HRT – 199 on 21 Sep at Pointe Mouillee SGA DNR Headquarters, *Wayne* and 108 on 22 Sep at LEMP (CB).

Merlin (12,10,16) 28 at DRHW was a bit lower than average (CB). One on 22 Aug at Ann Arbor, *Washtenaw* (RN) was very early. 49 from 21 Aug-8 Nov with max of 3 on 24 Sep at WP. 7 from 20 Sep-2 Nov with max of 2 on 20 and 21 Sep at Muskegon SP, *Muskegon* (RP, CW, JJ). HRT – 2 ads. with 4 juvs. on 1 Aug in Baldwin Twp., *Iosco* (REr).

Peregrine Falcon (5,4,18) 37 at DRHW was low. 19 from 27 Sep-17 Oct at WP. 9 from 21 Sep-3 Nov with max of 3 on 21 Sep at Muskegon SP, *Muskegon* (RP, CW, JJ). HRT – 4 on 18 Sep at Pointe Mouillee SGA DNR Headquarters, *Wayne* (CB). NLP reports came from *Alpena*, *Bay* (1 on 3 Oct at

Bay City, *SMA*), *Iosco* (1 on 13-18 Sep at TPSP, REr, RD, MHA), and *Presque Isle*.

YELLOW RAIL (0,0,1) One was found dead on 13 Oct at Ann Arbor, *Washtenaw* (JoB).

Virginia Rail (1,3,4) Reports came from Allegan (1 on 3 Nov at ASGA, RB), *Bay*, *Chippewa* (2 on 1 Aug at Munuscong WMA, BJ, KZ), *Iosco*, *Mason* (1 on 19 Nov at Ludington SP, DCD), *Oakland* (3 on 30 Aug at Kensington MP, RWH), and *Saginaw* (HRT – 13 on 27 Aug, LMA, LRD – 1 on 15 Oct, DJP, both at SNWR).

Sora (2,4,8) HRT – 5 on 30 Aug and 4 on 6 & 20 Sep at PM (AMB) and 4 on 27 Aug at SNWR, LMA). UP reports came from *Chippewa* (1 on 3 Sep at WP) and *Delta*. NLP reports came from *Bay* (1 on 18 Oct in Hampton Twp., *SMA*), *Iosco*, *Mason* (3 on 13 Oct at Pere Marquette marsh, DCD), and *Wexford* (1 on 9 Aug in Liberty Twp., RB).

Common Moorhen (0,2,7) HRT – 21 on 28 Sep and LRD – 1 on 22 Oct, both at Crow Island SGA, *Saginaw* (REr). Other reports came from *Bay* (1 on 11 Oct at Nayanquing Point SWA, RD), *Berrien* (juv. on 23 Aug at Three Oaks Sewage Ponds, JTW), *Gladwin* (2 ads. with 3 young on

21 Sep, ES), *Gratiot* (2 imm. on 9 Aug at Maple River SGA, PD, DMc), *Ingham*, *Monroe* (max of 15 on 20 Sep at PM, AMB), *Oakland* (juv. on 7 Sep, DF), and *St. Clair* (2 on 6 Aug at Harsen's Island, ATC).

American Coot (5,6,24) HRT – 3350 on 27 Oct at LEMP (WGP). Unusual was a leucistic bird on 30 Oct at Lake Lansing, *Ingham* (BCo).

Sandhill Crane (11,14,30) HRT – 7292 on 31 Oct at Bake Sanctuary, *Calhoun* (RCF). 38 on 28 Nov at SNWR was noteworthy in comparison to 10 years ago when there were only two Nov records.

Black-bellied Plover (3,8,11) FFM – 1 on 8 Aug in Brownstown Twp., *Wayne* (WGP). LRD – 4 on 4 Nov at TPSP (JSo). HRT – 18 on 26 Oct at AuGres, *Arenac* (REr) and 12 on 20 Sep at PM (AMB). UP reports came from *Alger* (1 on 2 Sep at Au Train, SCH), *Chippewa* (32 from 25 Aug-13 Oct with max of 5 on 25-26 Sep at WP), and *Mackinac*.

American Golden-Plover (7,8,12) FFM – 2 on 19 Aug at PM (ATC). HRT – 116 on 21 Sep in Allegan (RB). LRD – 2 on 30 Oct in Brownstown Twp., *Wayne* (WGP). 150 from 5 Sep-20 Oct with max of 29 on 22 Sep at WP. 1 on 3 Oct at Crystal Falls Golf Course was noteworthy for inland UP (*fide* BR).

Semipalmated Plover (5,8,11) FFM – 2 on 6 Aug at Au Train, *Alger* (SCH). HRT – 70 on 20 Aug at PM (ATC). LRD – 1 on 7 Nov at

Linwood, Bay (MWi). 63 from 19 Aug-27 Sep with max of 6 on 25 Aug at WP.

Piping Plover (2,2,2) One on 19 Aug at Manistee, *Manistee* (AB); 1 from 19-23 Aug at WP; 1 on 20 Aug at PM (ATC); 3 on 1 Sep at Platte River, *Leelanau* (CFr); 1 on 21 Oct at Pointe Mouillee DNR Headquarters, *Wayne* (WW, LC); and a report from *Alger*.

Killdeer (9,17,34) HRT – 583 on 19 Sep at ASGA (RB).

BLACK-NECKED STILT (0,0,1) Male with 3 young were last observed on 30 Aug at PM (m.ob.).

American Avocet (0,2,2) One on 5 Aug at Warren Dunes SP, *Berrien* (BAn); 1 on 2-10 Sep at MWS (JPo, m.ob.); 3 on 9 Nov in Hampton Twp., *Bay* (SFr); and 1 on 9 Nov at Dow Ponds, *Midland* (JZi).

Spotted Sandpiper (10,11,20) HRT – 17 on 4 Aug at PM (AMB) and 9 on 5 Sep at MWS (BJ, CW). LRD – 1 on 7 Nov at WP.

Solitary Sandpiper (8,6,26) HRT – 20 on 9 Aug at SNWR (DJP) and 20 on 18 Aug in *Allegan* (RB). LRD – 1 on 27 Sep at SNWR (SG).

Greater Yellowlegs (7,7,18) HRT – 67 on 11 Sep at SNWR (DJP) and 50 on 23 Sep at Moran, *Mackinac* (SBa). LRD – 1 on 12 Nov at Flat Rock, *Wayne* (WGP).

Willet (2,1,3) One on 4 Aug and 7 on 13 Aug at *St. Joseph, Berrien*

(MH); 1 on 23 Aug at Munising, *Alger* (SCH); 1 on 24 Aug at MWS (PCa, JC, ES); and on 29 Aug at Naubinway, *Mackinac* (SJ). NLP report came from *Presque Isle*.

Lesser Yellowlegs (8,10,20) HRT – 615 on 4 Aug at PM (AMB) and 330 on 4 Sep at SNWR (DJP). LRD – 1 on 29 Nov at Detroit Yacht Club, *Wayne* (JFa).

Upland Sandpiper (0,0,1) The only report was 1 on 4 Aug at PM (AMB).

Whimbrel (3,1,1) Singles on 18 Aug and 26 Sep along Lake Huron shoreline, *Iosco* (REr); 2 on 30 Aug (TB, SH) and 1 on 7 Sep at WP; 1 on 30 Aug at Bete Gris Road, *Keweenaw* (ZG, SCH); 2 on 7 Sep at *Marquette, Marquette* (SH, ZG); and 1 on 20 Sep at PM (AMB).

Hudsonian Godwit (1,0,2) One on 13 Aug at PM (KOv), 1 on 14 Aug and 2 on 28 Aug at SNWR (DJP), and 1 on 24 Sep at WP.

Marbled Godwit (0,0,1) Singles on 13 Aug (KOv), 25-26 Aug (RE, TW), and 20 Sep (AMB) at PM.

Ruddy Turnstone (2,4,3) 10 from 19 Aug-14 Sep with max of 2 on 25 Aug at WP; from 19 Aug-14 Sep with max of 8 on 6 Sep at PM (ATC, AMB, JJo); singles on 30 Aug (JSo) and 7 Sep (DJa) at TPSP; 1 on 1 Sep at *Manistee, Manistee* (BA); 2 on 6 Sep at SNWR (LMA); 11 Sep at *Ojibwa Beach, Baraga* (JY); and 1 on 19 Sep along Lake

Huron shoreline, *Iosco* (REr); and reports from *Arenac* and *Benzie*.

Red Knot (0,0,3) One on 19 Aug (ATC), 1 on 30-31 Aug (AMB, BB), and 2 on 6-14 Sep (AMB, JJo) at PM; 1 on 29-30 Aug at LEMP (WGP); 23 Aug in *Muskegon* (CF); and 1 on 8 Sep in *Wayne* (CB).

Sanderling (5,11,9) FFM – 1 on 4 Aug in *Sumpter Twp., Wayne* (WGP). LRD – 1 on 17 Nov at *Pere Marquette Park, Muskegon* (KZ). 677 from 19 Aug-9 Nov with max of 69 (HRT) on 7 Sep at WP. Other high counts were 60 on 6 Sep at *Ludington SP, Mason* (DCD) and 55 on 20 Sep at *Au Train, Alger* (SCH).

Semipalmated Sandpiper (4,6,15) HRT – 350 on 19 Aug at PM (ATC). LRD – 1 on 1 Nov in *Brownstown Twp., Wayne* (WGP). UP reports came from *Alger, Chippewa* (81+ from 17 Aug-11 Sep with max of 20 on 20 Aug at WP), *Houghton*, and *Schoolcraft*.

WESTERN SANDPIPER (0,0,1) Two different juvs. on 31 Aug (BB) and 6-15 Sep (AMB, BM, CP) at PM; both accepted by MBRC.

Least Sandpiper (6,10,23) HRT – 389 on 21 Aug at SNWR (DJP) and 200 on 19 Aug at PM (ATC). LRD – 1 on 31 Oct at ASGA (RB).

White-rumped Sandpiper (0,0,7) 3 on 3 Sep at MWS (CP); 1 on 3 Sep at *Avis Farms, Washtenaw* (RW); present from 6-20 Sep with max



of 28 on 6 Sep (AMB); 1 on 15-17 Sep in *Eaton* (DMc, SC); 1 on 3 Oct at SNWR (DJP); 1 on 25 Oct at Branch County Sewage Ponds, *Branch* (SaS, JHa); and 1 on 26 Oct at Deckerville, *Sanilac* (KOV, m.ob.).

Baird's Sandpiper (7,6,16) FFM – 1 on 2 Aug in Sumpter Twp., *Wayne* (WGP). HRT – 29 on 14 Sep at SNWR (DJP), 28 on 6 Sep at PM (AMB), 26 on 5 Sep (BJ, CW) and 24 on 2 Sep (JPo) at MWS, and 25 sometime in Aug at Calumet Sewage Ponds, *Houghton* (SCH). 83 from 19 Aug–25 Sep with max of 10 on 4 Sep at WP. 1 on 24–26 Aug at American Center Marsh, *Oakland* (ATC, DF) was noteworthy.

Pectoral Sandpiper (8,5,17) HRT – 131 on 6 Sep at PM (AMB). LRD – 1 on 14 Nov at Avis Farms was a record county late date (MSe).

Purple Sandpiper (0,3,1) Singles on 3–6 Nov and 29–30 Nov at Ludington Harbor, *Mason* (DCD); 1 on 6–23 Nov at *Oscoda*, *Iosco* (FA, REr, WWS, m.ob.); 1 on 17 Nov (KZ), 4 on 22 Nov (JoL), and 6 on 23 Nov (*fide* BJ), all at Pere Marquette Park, *Muskegon*; and 1 on 30 Nov at First St. Pier, *Manistee* (BA).

Dunlin (3,8,9) FFM – 2 on 1 Sep at Black River, *Alcona* (ToP). HRT – 150 on 31 Oct in Brownstown Twp., *Wayne* (WGP). LRD – 8 on 26 Nov at PM (AMB). UP reports came from *Alger* (1 on 4 Oct at Au Train,

SCH), *Chippewa* (singles on 4 dates from 30 Sep–26 Oct at WP), and *Mackinac*.

Stilt Sandpiper (5,4,11) HRT – 53 on 28 Aug at SNWR (DJP) and 30 on 20 Aug (ATC) and 23 on 20 Sep (AMB) at PM. NLP reports came from *Arenac*, *Bay* (1 on 22 Sep in Hampton Twp., JSo), *Iosco*, and *Midland*. 1 on 19 Sep at WP was rare.

Buff-breasted Sandpiper (5,1,9) FFM – 1 on 3 Aug at MWS (JWi). HRT – 15 on 14 Sep at PM (JJo). LRD – 3 on 16 Sep at *Baraga*, *Baraga* (JY). 20 from 22 Aug–16 Sep with max of 3 on 15 Sep at WP. NLP report was 1 on 18 Aug along Lake Huron shoreline, *Iosco* (REr).

RUFF (0,0,1) One on 19–23 Aug at PM (ATC, RE, DF, LH, m.ob.); accepted by MBRC.

Short-billed Dowitcher (4,0,5) HRT – 115 on 19 Aug at PM (ATC). LRD – 4 on 20 Sep at PM (AMB). Other reports came from *Berrien* (12 on 6 Sep at Warren Dunes SP, TBe), *Delta* (30 Aug at Portage Marsh, SJ), *Houghton*, *Iron* (1 Sep at Crystal Falls, SJ), *Muskegon* (2 on 25 Aug and 4–5 Sep at MWS, JPo, CP, BJ, CW), *Saginaw* (12 juvs. on 11 Sep and 1 juv. on 18 Sep at SNWR, DJP), *Schoolcraft*, and *Washtenaw* (2 on 11 Oct, MSJ).

Long-billed Dowitcher (1,0,5) Present to 20 Sep with max of 10

on 20 Sep at PM (AMB, m.ob.); 1 on 1 Aug in Sumpter Twp., Wayne (WGP) was a holdover from summer; from 1-29 Sep with max of 21 on 29 Sep at SNWR (DJP, SG); juv. on 5 Sep at Chassel Sewage Ponds, *Houghton* (JY); 1 on 27 Sep at MWS (CF) was the first county record since 2002; and 1 on 10 Oct at Potterville sewage ponds, *Eaton* (DMc).

Wilson's Snipe (7,7,20) FFM – 26 Aug in Hillsdale (JR). HRT – 142 on 3 Nov in *Jackson* (DHe, RHe). LRD – 1 on 18 Nov at SNWR (JJD).

American Woodcock (5,7,10) LRD – 1 on 9 Nov in *Dickinson* (EJO, GRO).

Wilson's Phalarope (0,1,4) 2 on 8 Aug (MKE), 1 on 23 Aug (KOv), and 2 on 18 Sep (RD, MHa) at Dow Ponds, *Midland*; up to 2 from 20-29 Aug at PM (TW, ATC, m.ob.); 2 on 4 Sep and 1 on 18 Sep at SNWR (DJP); and reports from *Genesee* and *Muskegon*.

Red-necked Phalarope (2,3,5) FFM – 15 juvs. on 18 Aug at MWS (EE). HRT – 20 on 23 Aug at MWS (CF). 4 on 25 Aug at *Marquette*, *Marquette* (MS) represent on the 2nd county record and first since 1963! The other UP report was 1 on 11 Sep at WP. NLP reports came from *Alpena*, *Antrim* (1 on 6 Sep at Elk Rapids sewage ponds, SSa), and *Midland* (1 on 28 Aug and 2 on 29 Aug at Dow Ponds, MKE).

RED PHALAROPE (1,0,1) Singles on 5 Oct at WP (KC, RC, CN, TB) and 26 Nov+ at PM (AMB, PCC, BM, GB); both accepted by MBRC.

Black-legged Kittiwake (1,0,1) An imm. on 25 Oct at Branch County sewage ponds, Branch (SaS, JHa) was unusual for an inland site. Other reports were singles on 28 Oct and 15 Nov at WP.

Sabine's Gull (1,0,1) One on 25 Oct at Pere Marquette Park, *Muskegon* (JoL) was the first county record since 2004. Other reports were singles on 17 Sep and 5 Oct at WP.

Bonaparte's Gull (4,14,23) HRT – 1200 on 28 Nov at *Saginaw River*, *Bay* (LD); 935 on 22 Nov in *Brownstown Twp.*, Wayne (WGP); 887 on 26 Nov at PM (AMB); 792 on 11 Oct at *Ludington SP*, *Mason* (DCD, TG); and 700+ on 26 Oct at *Midland Cogeneration Venture Ponds*, *Midland* (MKE). UP reports came from *Alger* (earliest report was 1 on 9 Aug at *Au Train*, SCH), *Chippewa* (156 from 19 Aug-7 Nov with a max of 34 on 25 Sep at WP), *Dickinson*, and *Mackinac*.

BLACK-HEADED GULL (0,0,1) An ad. on 20 Oct at *Douglas Public Beach*, *Allegan* (RB) was accepted by MBRC.

Little Gull (1,3,4) One on 27 Sep at *St. Joseph*, *Berrien* (CP, TB); 1 on 3 Oct at WP; 1 on 2 Nov at *Pere Marquette Park*, *Marquette* (FD); ad. on 9 Nov at *Huron River* mouth,



Monroe/Wayne (SJ, ATC); singles on 10-11 Nov (KM, AV, RJ) and 17 Nov (AV, RJ) at Three Oaks, Berrien; 1 on 13 Nov at Au Gres, Arenac (REr); a first cycle bird on 28-31 Nov at Saginaw River mouth, Bay (LD); and a report from Alcona.

Franklin's Gull (1,2,11) FFM – juv. on 28 Aug at Peninsula Point, Delta (SH, ZG). HRT – 18 on 9 Nov at Lake Lansing, Ingham (BCo); 15 on 14 Nov at SNWR (DJP); 11 on 8-9 Nov in Allegan (RB, SMi, MO); and 10 on 10 Nov at Three Oaks, Berrien (KM). LRD – first cycle bird on 29 Nov at Saginaw River, Bay (LD). The only other NLP report was 1 on 9 Nov at Au Gres, Arenac (SG). Also reported from Calhoun, Livingston, Monroe, Oakland, Ottawa, Shiawassee, Washtenaw, and Wayne.

Ring-billed Gull (15,26,33) HRT – 5680 on 6 Nov at SNWR (DJP).

CALIFORNIA GULL (0,0,1) A third cycle bird on 24 Nov at Three Oaks, Berrien (TB)(p.a.).



This California Gull was photographed at Three Oaks on 24 November 2008. Photo by Tim Baerwald.

Herring Gull (12,20,30) HRT – 8166 on 26 Nov at SNWR (DJP).

Thayer's Gull (3,0,3) Present after 10 Oct at Marquette, Marquette with mostly first cycle birds and some ads. – at least 12-15 different individuals with up to 4 on several dates (SH, ZG, DP). Other UP reports were a first cycle bird on 6 Nov at Munising, Alger (SCH): 1 on 15 Nov at WP; and 2 ads. on 29 Nov at Dafter Dump, Chippewa (SBa). SLP reports were 2 on 28 Nov at Pere Marquette Park, Muskegon (DP, JPa); an ad. on 29 Nov at Visteon Ponds, Wayne (EE); a 2nd cycle bird on 29 Nov at New Buffalo, Berrien (KM); and an ad. on 30 Nov at MWS (EE).



Identification of Thayer's Gull is always challenging, resulting in potential headaches for compilers. This excellent photo of a juvenile/first cycle bird taken on 7 November 2008 helped document the good number present this fall at Marquette. Photo by David Pavlik.

Iceland Gull (3,0,1) An ad. on 27 Sep at Sand Point, Alger (ZG, SCH) was very early. Modest numbers after 5 Nov at Munising, Alger,

daily totals never exceeded 1-2 birds (m.ob.). Other UP reports were an imm. on 29 Nov at Dafter Dump, *Chippewa* (SBa) and modest numbers in Nov at Marquette, *Marquette* with daily totals not exceeding 1-2 birds (m.ob.). The only SLP report was an ad. on 25 Nov at Three Oaks, *Berrien* (MH).

Lesser Black-backed Gull (0,2,12) FFM – 1 on 17 Aug at PM (TW). HRT – 7 on 9 Nov at Whiting Power Plant, *Monroe* (TW) and 4 ads. on 25 Nov at SNWR (DJP). NLP reports came from *Bay* and *Manistee* (1 on 11 Oct at *Manistee*, BA).

Glaucous Gull (3,2,9) FFM – one in its first cycle on 10 Oct at Marquette, *Marquette* (SH). HRT – 4 on 27 Nov at Marquette, *Marquette* (fide SH). Other UP reports came from *Alger* (1 on 6 Nov at Shelter Bay and observed regularly in late Nov with max of 3 first cycle birds on 28 Nov at *Munising*, SCH), *Chippewa*, and *Marquette* (1 on 14 Oct and 1+ in early Nov at Marquette, *Marquette*, SH). NLP reports came from *Bay* and *Midland* (1 on 10 Nov at Sanford Lake, MKE).

Great Black-backed Gull (4,3,7) FFM – 1 on 8 Aug at LEMP (WGP). HRT – 9 on 26 Nov at PM (AMB) and 7 on 30 Nov at Harrisville SP, *Alcona* (ToP). UP reports were 8 from 5 Oct-15 Nov with max of 2 on 15 Nov at WP; 1 on 8 Oct at

Munising, *Alger* (SCH); 1 on 10-11 Oct at Peninsula Point, *Delta* (fide SH); and sightings after early Nov at Marquette, *Marquette* (SH). Other NLP reports were 1 on 10 Oct at Finn Rd. Park, *Bay* (JSo) and 4 on 30 Oct at Oscoda, *Iosco* (WWS).

Caspian Tern (5,10,13) HRT – 89 on 11 Aug in Brownstown Twp., *Wayne* (WGP) and 50 on 20 Aug at PM (ATC). LRD – 1 on 30 Oct in Brownstown Twp., *Wayne* (WGP).

Common Tern (3,5,7) HRT – 448 on 7 Sep at LeBourdais Rd., *Bay* (REr) and 330 on 15 Sep at South Haven, *Van Buren* (RS). LRD – 1 on 1 Nov at LEMP (WGP). UP reports were 20 on 7 Aug at Round Lake, *Mackinac* (SBa); 457 from 22 Aug-15 Oct with max of 163 on 13 Sep at WP; and 28 on 14 Sep at Au Train, *Alger* (SCH).

Forster's Tern (0,3,10) HRT – 60 on 30 Sep in Brownstown Twp., *Wayne* (WGP); 50 on 22 Sep at LEMP (ATC); 39 on 5 Oct at LeBourdais Rd., *Bay* (REr); and 35 on 28 Oct at Pointe Mouillee DNR Headquarters, *Wayne* (ATC). LRD – 1 on 9 Nov at LeBourdais Rd., *Bay* (REr). Other NLP reports came from *Emmet* (3 on 10 Aug at Sturgeon Bay Point, RB) and *Mason*.

Black Tern (1,8,6) 4 on 30 Aug at WP was the only UP report.

jaeger species (3,1,3) 25 from 28 Aug-11 Oct with max of 3 on 31 Aug and 17 & 30 Sep at WP; 1



on 26 Sep at Big Bay Lighthouse, Marquette (SH); singles on 27 Sep (TB) and 2 Oct (AV, RJ) at St. Joseph, Berrien; 1 on 30 Sep at Presque Isle Park, Marquette (DP); 1 on 20 Oct at Manistique, Schoolcraft (RA); 1 on 26 Oct at Pere Marquette Park, Muskegon (CP); 1 on 11 Nov at Jones Rd., Bay (JSo); and 1 on 15 Nov at Port Huron, St. Clair (BMa).

ANCIENT MURRELET (1,0,0)

One on 31 Oct at WP (DJ) was accepted by MBRC.

Rock Pigeon (12,18,31) HRT - ~150 on 28 Nov at Saginaw, Saginaw (DJP).

WHITE-WINGED DOVE (1,0,1)

Singles on 7 Sep at Milakokia Lake, Mackinac (BBr, JBr) and 29 Oct at Seven Ponds Nature Center, Lapeer (MC); both accepted by MBRC.



Will White-winged Doves become annual in Michigan? This fall there were two, with the one shown here at Milakokia Lake, Mackinac Co. on 7 September 2008. *Photo by Barb and Jeff Brockway.*

Mourning Dove (14,30,35) HRT - 400+ on 25 Sep at Noggle Rd., Arenac (REr).

Yellow-billed Cuckoo (2,1,19)

LRD - 1 on 5 Oct at Oakwoods MP, Wayne (WGP). UP reports came from Chippewa (1 on 17 Sep at WP) and Dickinson. NLP report was 1 on 24 Aug at TPSP (WWS, REr).

Black-billed Cuckoo (3,1,9) HRT -

pair on 12 Aug at Lost Nation SGA, Hillsdale (JR). LRD - 27 Sep in Hillsdale (JR). UP reports came from Dickinson, Gogebic (1 Sep, SJ), and Schoolcraft. NLP report came from Oscoda.

Eastern Screech-Owl (0,2,18) HRT

- 2 on 27 Sep at Lane's Landing, Muskegon (CF). Northernmost reports from Bay and Manistee (1 on 15 Sep along Bar Lake Rd., BA).

Great Horned Owl (4,5,16) HRT -

8 on 12 Oct at SNWR (SFK) was a new Saginaw Bay Area peak count. UP reports came from Dickinson (2 on 4 Oct at Golf Iron Mountain, EJO, GRO), Iron, Keweenaw (2 on 27 Aug at Allouez, NA), and Mackinac.

Snowy Owl (8,4,6)

An excellent invasion in UP with up to 35-40 birds; one apparently rode on the back of a large truck for ~50 miles! FFM - 1 on 21 Oct at Muskegon, Muskegon (BS). HRT - 10 on 29 Nov at Rudyard, Chippewa (SH, JH, MHu). NLP reports were 1 on 7 Nov at outlet from Ludington Pumped Storage Reservoir, Mason (DCD, JBa); an imm. on 10-20 Nov at Oscoda,

losco (CWG); an imm. on 11 Nov at Callahan Rd., Bay (JSo); 1 on 15-29 Nov at TPSP (JZi, DJa); 1 on 16 Nov at Saginaw River, Bay (LD); 1 on 19 Nov at Ludington Harbor, Mason (DCD); and a report from Emmet. Southernmost report was 1 on 28 Oct-6 Nov in Pipestone Twp., Berrien (LMa, JTW, CNe, MW, m.ob.).



Fall of 2008 began a good irruption of Snowy Owls into the state. This one posed nicely on the dunes at Whitefish Point on 3 November 2008. Photo by Chris Neri.

Northern Hawk Owl (2,0,0)

Singles on 25 Nov near Houghton Airport, Houghton (NA, TA) and 30 Nov at Rudyard, Chippewa (JN).

Barred Owl (7,9,12) HRT – 4 on 11 Aug at Pictured Rocks National Lakeshore, Alger (BJ, MP).

Great Gray Owl (1,0,0) The only report was 1 on 18 Oct at WP.

Long-eared Owl (3,1,4) 6 from 16 Aug-18 Oct with max of 2 on 18 Oct at WP; 1 Sep near Marenisco,

Gogebic (SJ); 1 on 28 Oct at Manistique, Schoolcraft (RA); 1 on 4 Nov at Sarett Nature Center, Berrien (MMA); 1 on 15 Nov in Oronoko Twp., Berrien (*fide* JTW); 1 on 20 Nov-TP in Penn Twp., Cass (*fide* JiB); 1 on 20 Nov in Berrien (AV); 1 on 24 Nov at Caro, Tuscola (MWi); 1 on 26 Nov at SNWR (DJP); and a report from Alcona.

Short-eared Owl (2,2,9) FFM – 1 on 21 Sep at SNWR (JJD). HRT – 8 on 25 Oct in Hampton Twp., Bay (SMa). 4 at DRHW was a record total for that count. UP reports were 1 on 14 Oct at Arnheim DNR area, Houghton (JY) and singles on 20 Oct and 1 Nov at WP. The only other NLP report was 1 flying over Lake Michigan on 11 Sep at Nordhouse Dunes, Mason (BJ).

Boreal Owl (1,0,0) 26 from 25 Sep-1 Nov with max of 7 on 9 Oct at WP.

Northern Saw-whet Owl (2,0,2) 73 from 15 Aug-1 Nov with max of 13 on 9 Oct at WP. Other reports came from Mackinac, Washtenaw (1 on 12 Oct at Independence Lake, DoC, PRe), and Wayne (1 on 5 Oct at Wayne and 2 on 29 Nov at LEMP, ALC, TWC).

Common Nighthawk (10,11,12) HRT – 120+ on 30 Aug at Stover Rd., Arenac (DJa) was the first report of more than 100 birds in the Saginaw Bay area in 15 years! LRD – 21 Sep at Ann Arbor, Washtenaw (MSJ).

Whip-poor-will (4,1,0) Singles reported on 30 Aug at Lake Antoine, *Dickinson* (SJ); 1 Sep in Gogebic (SJ); 1 Sep in Ontonagon (SJ); 1 Sep in Cheboygan (MRS); and 16 Sep at WP.

Chimney Swift (5,5,26) HRT – 142 on 6 Oct at Andrews University, Berrien (RB) and 100+ on 20 Aug at Kensington Metropark, Oakland (RWH). LRD – 30 in Hillsdale (JR) and 8 at Bay City, Bay (LD) on 13 Oct.

GREEN VIOLETEAR (0,0,1) One on 18-28 Oct in Cascade Twp., Kent (SN) was accepted by the MBRC.

Ruby-throated Hummingbird (14,18,32) HRT – 79 on 15 Aug in Battle Creek Twp., *Calhoun* (ATC). LRD – 1 on 24 Oct in Clyde Twp., *St. Clair* (SBH).

RUFIOUS HUMMINGBIRD (0,0,2) An ad. male on 7 Nov-TP at Holland, *Ottawa* (NG, m.ob.) and an ad. female on 12 Nov-TP at Shields, *Saginaw* (BC, ATC, m.ob.); both accepted by MBRC.

Belted Kingfisher (12,18,30) HRT – 3 on 10 Aug at Wycamp Lake, Emmet (RB); 3 on 14 Aug at SNWR (DJP); 3 on 2 Sep at Morrison Bayou, *Allegan* (RB); 3 on 26 Sep at Race Road, *Dickinson* (EJO, GRO); and 2 on 9 Aug at Maple River SGA, *Gratiot* (PD, DMc).

Red-headed Woodpecker (2,7,15) HRT – 4 on 18 Aug at ASGA (RB) and 4 on 1 Nov at Round Lake/

Sand Lake, *Iosco* (DJa). UP reports came from *Dickinson* (singles on 3 Oct and 11 Nov at Iron Mountain, EJO, GRO) and Gogebic (1 Sep, SJ).

Red-bellied Woodpecker (3,15,33) HRT – 8 on 11 Nov at SNWR (DJP) and 5 on 10 Oct at Lincoln Brick Park, *Clinton* (JB). UP reports came from *Dickinson* (1 on 14 Sep at Iron Mountain, EJO, GRO), *Mackinac*, and *Schoolcraft*.

Yellow-bellied Sapsucker (11,15,20) HRT – 4 on 21 Sep at Ann Arbor, *Washtenaw* (MSJ); 4 on 30 Sep at LEMP (WGP); and 3 on 19 Sep at TPSP (WWS, REr).

Downy Woodpecker (11,25,35) 284 from 1 Sep-15 Nov with max of 21 on 6 Oct at WP. Another high count was 11 on 22 Nov at SNWR (DJP).

Hairy Woodpecker (11,22,30) 23 from 29 Aug-4 Nov with max of 5 on 18 Oct at WP. Another high count was 5 on 3 Nov near Cooke Dam, *Iosco* (WWS).

AMERICAN THREE-TOED WOODPECKER (1,0,0) An ad. male on 5 Oct near Cliff River, *Marquette* (RBa) was accepted by MBRC.

Black-backed Woodpecker (11,0,0) Good numbers were reported from across the UP. 21 from 29 Aug-22 Oct with max of 3 on 4 Oct at WP. Other high totals were 4 on 12 Oct along Yellow Dog River, *Marquette* (SH, AR); 4 on 21 Oct

at Black Creek Nature Sanctuary, Keweenaw (JZ); 3 on 8 Sep at Sleeper Lake Burn, Luce (RBa); 3 on 4 Oct at Mulligan Plains, Marquette (RR); and 3+ on 12 Oct at Big Bay, Marquette (*vide* SH). Singles on 11 Oct (JA) and 7 Nov (SH, JH, MHu) at Peninsula Point, Delta were noteworthy.

Northern Flicker (14,15,35) HRT – 17 on 19 Sep at TPSP (WWS, REr). 74 from 26 Aug-28 Oct with max of 12 on 17 Sep at WP.

Pileated Woodpecker (13,19,24) HRT – 3 on 2 Sep at Morrison Bayou, Allegan (RB); 3 on 27 Sep at SNWR (LMA); and 2 TP in Casco Twp., St. Clair (REE). 7 from 22 Sep-18 Oct with max of 2 on 10 Oct at WP.

Olive-sided Flycatcher (8,8,13) FFM – 2 at Halmich Sod Farms, Ingham (JR) and 1 at Muskegon SP, Muskegon (SMi, JWi), both on 17 Aug. LRD – 1 on 18 Sep in Hillsdale (JR).

Eastern Wood-Pewee (12,13,32) HRT – 9 on 25 Aug at SNWR (LMA) and 8 on 11 Aug at Good Hart, Emmet (RB). Singles on 3 dates from 26 Aug-10 Oct (LRD) at WP.

Yellow-bellied Flycatcher (7,1,9) HRT – 6 on 3 Sep, LRD – 1 on 9 Oct, both at Metro Beach Metropark, Macomb (ATC). The only NLP report was 1 on 16 Aug at Wigwam Bay, Arenac (DJa).

Acadian Flycatcher (0,0,9) Reports came from Berrien, Branch (10 Aug in Union Twp., JO), Clinton (1 on 3 Aug at Lincoln Brick Park, JB), Hillsdale (last reported on 25 Sep, JR), Ingham (1 on 6 Aug at Dansville SGA, TRW, DMc), Kalamazoo (last reported on 20 Sep, RK), Livingston, Macomb (1 on 25 Aug at Metro Beach Metropark, ATC), and Tuscola (3 on 6 Aug at Murphy Lake SGA, MWi, DJa).

Alder Flycatcher (10,4,4) LRD – 1 on 9 Sep at WP. LP reports came from Bay, Berrien (1 on 3 Aug at Dayton Wet Prairie, JTW), Charlevoix, Clare (early Aug, ES), Hillsdale (last reported on 5 Aug, JR), Ingham (1 on 6 Aug at Dansville SGA, TRW, DMc), Iosco, and Macomb (2 on 7 Aug in Ray Twp. and 1 on 3 Sep at Metro Beach MP, ATC).

Willow Flycatcher (0,3,15) HRT – 4 on 5 Aug in Ira Twp., St. Clair (ATC). LRD – 19 Sep in Kalamazoo (RK). NLP reports came from Bay (2 on 2 Aug at Nayanquing Point, DJa, and 1 on 11 Aug in Hampton Twp., JSO), Iosco, and Midland.

Least Flycatcher (8,3,15) HRT – 9 on 27 Aug at Metro Beach Metropark, Macomb (ATC). 9 from 3-14 Sep with max of 5 on 3 Sep at WP. NLP reports came from Bay (1 on 25 Aug at Pinconning Park, DJa), Iosco, and Oscoda.

***Empidonax* species** (0,0,1) LRD – 1 on 1 Oct at Lincoln Brick Park, Clinton (JB).

Eastern Phoebe (13,18,31) HRT – 6 on 11 Oct at Metro Beach Metropark, Wayne (ATC) and 5 on 10 Oct in Ingham (JR). LRD – 1 on 18 Nov in Alamo Twp., Kalamazoo (RS).

SAY'S PHOEBE (2,0,0) One on 29 Sep straddled the county line at Arnheim, Baraga/Houghton (MHe, JY); accepted by MBRC.

Great-crested Flycatcher (2,9,21) HRT – 12 on 25 Aug at SNWR (LMA). LRD – 17 Sep in Kalamazoo (RK). UP reports came from Alger and Menominee (30 Aug, SJ).

Western Kingbird (2,0,0) Singles on 26 Aug and 17 Sep at WP and 1 on 6 Sep at Calumet Sewage Ponds, Houghton (MHe).

Eastern Kingbird (9,17,31) HRT – 33 on 6 Aug at Harsen's Island, St. Clair (ATC) and 26 on 7 Aug at TPSP (REr). LRD – 2 on 11 Oct in Tuscola (DFe, REF) were very late.

Northern Shrike (4,4,9) 13 from 9 Oct-13 Nov with max of 2 on 21 Oct at WP. Other UP reports came from Alger (first report was 1 on 15 Nov at Chatham, SCH), Baraga (1 on 16 Oct at Arnheim, JY), and Mackinac. NLP reports came from Bay, Cheboygan, Midland (juv. on 21 Oct at Hubert Rd., MKE), and Missaukee. 1 on 18 Oct at MWS (CD) was a record early date for the county.

White-eyed Vireo (0,0,4) 2 ads. feeding young on 28 Aug (DSp) with at least 2 lingering to 19 Sep (KM, MH, m.ob.) at Warren Dunes SP, Berrien; present to 18 Sep with a max of 5 on 11 Sep at Lost Nation SGA, Hillsdale (JR); last reported on 16 Sep in Kalamazoo (RK); and a report from Macomb.

Yellow-throated Vireo (3,6,20) LRD – 1 on 5 Oct at Nordhouse Dunes, Mason (BJ). UP reports came from Dickinson, Iron (1 on 17 Sep along Iron River, BR), and Schoolcraft (29 Aug at Gulliver Lake, SJ).

Blue-headed Vireo (4,8,25) HRT – 5 on 10 Oct in Ingham (JR). LRD – 1 on 18 Oct at Metro Beach Metropark, Macomb (ATC). UP reports were from Alger, Chippewa (10 from 4-15 Sep with max of 2 on 8-10 Sep at WP), Gogebic (1 Sep, SJ), and Menominee (30 Aug, SJ).

Warbling Vireo (9,4,17) HRT – 9 on 6 Aug at Harsen's Island, St. Clair (ATC); 8 on 6 Sep at SNWR (KOV, RE, SJ); and 13 from 28 Aug-19 Sep with max of 5 on 28 Aug at Muskegon Lake Nature Preserve, Muskegon (BJ). LRD – 1 recaptured on 4 Nov that was initially banded on 10 Oct at Rouge River Bird Observatory, Wayne (JCr). NLP reports came from Bay (4 on 25 Aug at Pinconning Park, DJa), Iosco, Missaukee, and Presque Isle.

Philadelphia Vireo (9,6,18) FFM – 1 on 24 Aug at Silver Creek County Park, Allegan (RB). LRD – 1 on 11 Oct at Metro Beach Metropark, Macomb (ATC). 9 from 10-22 Sep with max of 4 on 10 Sep at WP. 3 from 12-22 Sep with max of 2 on 12 Sep at Muskegon Lake Nature Preserve, Muskegon (BJ).

Red-eyed Vireo (14,18,29) HRT – 9 on 8 Sep at Warren Dunes SP, Berrien (WEJ) and 23 Sep at TPSP (REr). LRD – 11 Oct in Kalamazoo (RK) and Wayne (WGP). 33 from 26 Aug-2 Oct with max of 6 on 14 Sep at WP.

Gray Jay (10,0,0) HRT – 16 on 11 Oct at McCormick Tract Wilderness Area, Marquette (ZG).

Blue Jay (14,32,35) HRT – 1700 on 4 Oct at Muskegon SP, Muskegon (RP) and 1400 on 22 Sep at LEMP (ATC). 1228 from 20 Aug-19 Nov with max of 108 on 23 Sep at WP.

American Crow (14,28,33) HRT – 2500 on 17 Oct (ATC) and 2000 on 16 Oct (CB) at Pointe Mouillee DNR Headquarters, Wayne.

Common Raven (14,15,1) HRT – 11 on 11 Nov in Solma Twp., Wexford (CMS). 179 from 19 Aug-18 Nov with max of 8 on 6 Nov at WP. The southernmost report was 1 on 3 Oct at Muskegon SP, Muskegon (JL).

Horned Lark (9,12,29) HRT – 75 on 25 Nov at MWS (JPo). 482 from 9 Sep-7 Nov with max of 60 on 27 Sep at WP.

Purple Martin (1,4,16) HRT – 288 on 6 Aug at Harsen's Island, St. Clair (ATC). LRD – 1 on 1 Sep at Muskegon, Muskegon (m.ob.). UP report was on 1 Sep at Wakefield, Gogebic (SJ). NLP reports came from Arenac, Bay (last and highest report was 15 on 2 Aug in Bangor Twp., JSo), Iosco (6 on 1 Aug at Tuttle Marsh, WWS, REr), and Montmorency.

Tree Swallow (7,12,27) HRT – 10,000+ on 6 Sep at MWS (JPo) and 8000+ on 2 Oct in Wayne (CB). LRD – 2 on 11 Nov in Brownstown Twp., Wayne (WGP).

Northern Rough-winged Swallow (2,3,12) HRT – 186 on 14 Aug at SNWR (DJP) was a new Saginaw Bay area peak count. LRD – 1 on 12 Oct at SNWR (SFK). UP reports came from Delta and Menominee (30 Aug, SJ) and NLP reports from Iosco, Oscoda, and Presque Isle.

Bank Swallow (6,5,15) HRT – 542 on 15 Aug at SNWR (DJP). LRD – 3+ on 14 Sep at Crow Island SGA, Saginaw (REr).

Cliff Swallow (3,4,12) HRT – 10 on 19-20 Aug at PM (ATC). UP reports came from Alger (4 on 11 Aug at Pictured Rocks National Lakeshore, BJ, MP), Chippewa (37 from 19 Aug-9 Oct with max of 8 on 1-2 Sep at WP), and Mackinac. NLP reports came from Bay, Clare, Iosco, and Presque Isle.



Barn Swallow (9,12,34) HRT – 250 on 19 Aug at PM (ATC) and 200 on 1 Sep at New Buffalo, *Berrien* (KM). 21 from 19 Aug-13 Oct with max of 5 on 19 Aug at WP.

Black-capped Chickadee (14,28,34) HRT – 42 on 11 Aug at Petoskey, *Emmet* (RB). 787 from 21 Aug-19 Nov with max of 41 on 18 Sep at WP.

Boreal Chickadee (3,0,0) The majority of sightings were from Marquette: 4 on 4 Oct at Mulligan Plains (RR, GC); 5 on 11 Oct at McCormick Tract Wilderness Area (ZG); 4 on 8 Nov (m.ob.) and 1 on 23 Nov (DP, CG) at Peshekee Grade; 5 on 5 Nov at Clowry Truck Trail (*fide* SH); and 1 on 5 Nov at Van Riper SP (*fide* SH). Other reports were singles on 30 Aug at Bete Gris, *Keweenaw* (ZG) and 1 Nov along Escanaba River, *Dickinson* (GC).

Tufted Titmouse (0,16,33) HRT – 15 on 6 Oct in *Kalamazoo* (RK); 12 on 3 Oct near Cooke Dam, *Iosco* (WWS); up to 10 TP at Midland, *Midland* (JZi); and up to 8 TP at Long Lake, *Grand Traverse* (DW, EW). The northernmost report was from *Cheboygan*.

Red-breasted Nuthatch (14,23,29) FFM – 1 on 18 Aug at Mayville, *Tuscola* (MWi). 595 from 21 Aug-9 Nov with max of 47 on 10 Oct at WP.

White-breasted Nuthatch (12,23,35) HRT – 7 on 1 Sep at Lincoln Brick Park, *Clinton* (JB); 7 on 3 Oct near Cooke Dam, *Iosco* (WWS); 7 on 11 Nov at SNWR (DJP); up to 6 TP at Long Lake, *Grand Traverse* (DW, EW); 6 on 21 Nov at Oakwoods Metropark, *Wayne* (WGP); and 5 on 5 Oct in Union Twp., *Branch* (JO).

Brown Creeper (12,16,25) 74 from 4 Sep-18 Nov with max of 10 (HRT) on 10 Oct at WP. Another high count was 8 on 15 Nov at SNWR (DJP).

Carolina Wren (2,2,22) HRT – 5 on 17 Sep in *Kalamazoo* (RK); 5 on 18 Sep at Metro Beach Metropark, *Macomb* (ATC); 4 on 8 Sep at LEMP (WGP); and 3 on 10 Sep and 20 Sep at different sites in Ann Arbor, *Washtenaw* (MSJ). UP reports were singles on 14 Sep at Sault Ste. Marie, *Chippewa* (BA, KZ) and 20 Nov-TP in Chocoday Twp., *Marquette* (AJ, KJ). NLP reports were singles thru 18 Nov at Midland, *Midland* (MD); 18 Oct at Bay City, *Bay* (RHi); 7 Nov at Essexville, *Bay* (JSo); and 10 Nov at Sanford Lake, *Midland* (JD).

House Wren (3,9,30) HRT – 10 on 1 Aug at Milford, *Oakland* (ATC) and 8 on 6 Aug at Harsen's Island, *St. Clair* (ATC). LRD – 1 on 18 Oct at LEMP (WGP). UP reports came from *Alger* (last reported on 30 Sep at Shelter Bay, *SCH*), *Delta*, and *Dickinson* (4 on 16 Aug at Iron Mountain, *EJO*, *GRO*).

Winter Wren (8,8,18) FFM – 1 on 1 Sep in *Washtenaw* (DWR) was very early. LRD – 1 on 17 Nov at Inkster, *Wayne* (ATC). 51 from 6 Sep-22 Oct with max of 18 (HRT) on 10 Oct at WP.

Sedge Wren (5,2,6) HRT – 10 on 1 Aug at Munuscong Wildlife Management Area, *Chippewa* (BJ); 8 on 9 Aug at Maple River SGA, *Graiot* (PD); and 7 on 3 Aug at SNWR (LMA). LRD – 1 on 6 Oct at Andrews University, *Berrien* (RB). NLP reports came from *Iosco* and *Midland*.

Marsh Wren (1,3,11) HRT – 20 on 6 Aug at Harsen's Island, *St. Clair* (ATC). 1 on 1 Nov at Portage Marsh, *Delta* (SH, MHe) was late for the UP. NLP reports came from *Arenac*, *Bay* (5 on 19 Sep in Hampton Twp. and 1 on 11 Nov at Bay City SRA, JSo), and *Iosco*.

Golden-crowned Kinglet (10,14,29) 602 from 4 Sep-19 Nov with max of 103 (HRT) on 10 Oct at WP.

Ruby-crowned Kinglet (9,11,28) HRT – 39 on 15 Oct in *Kalamazoo* (RK); 38 on 17 Oct in Brownstown Twp., *Wayne* (WGP); and 30 on 26 Sep at TPSP (JZi). LRD – 1 on 22 Nov at Presque Isle Park (GC).

Blue-gray Gnatcatcher (3,5,23) HRT – 15 on 4 Aug at Port Crescent SP, *Huron* (MKE) was a new Saginaw Bay area fall high count. LRD – a very late bird on 28 Nov

at LEMP (RD). 48 from 30 Aug-25 Oct with max of 14 on 2 Sep at WP.

Eastern Bluebird (11,17,30) HRT – 22 on 21 Oct at Hubert Rd., *Midland* (MKE); 16 on 17 Oct at St. Charles, *Saginaw* (PR); 15 on 16 Oct in Huron Twp., *Wayne* (WGP); an 14 on 7 Aug in Ray Twp., *Macomb* (ATC).

Veery (2,2,15) HRT – 11 on 6 Sep at Metro Beach Metropark, *Macomb* (ATC) and 7 calling on 11 Sep in *Hillsdale* (JR). LRD – 27 Sep in *Kalamazoo* (RK). UP reports came from *Chippewa* (1 on 13-14 Sep at WP) and *Gogebic*. NLP reports came from *Arenac* and *Iosco*.

Gray-cheeked Thrush (3,3,12) FFM – 1 on 4 Sep at Fenner Nature Center, *Berrien* (JPa). HRT – 6 on 18 Sep and 5 on 6 Sep at Metro Beach Metropark, *Macomb* (ATC); 4 on 17 Sep in *Kalamazoo* (RK); and 5 from 18-30 Sep with max of 3 on 18 Sep at Muskegon Lake Nature Preserve, *Muskegon* (BJ). LRD – 1 on 13 Oct at Warren Dunes SP, *Berrien* (WEJ). UP reports came from *Chippewa* (singles on 7 dates from 13-25 Sep at WP), *Gogebic*, and *Marquette*. NLP reports came from *Alcona*, *Bay* (1 on 30 Sep at Bay City, LD), and *Iosco* (1 on 18 Sep at TPSP, RD, MHa).

Swainson's Thrush (10,7,23) FFM – 1 on 11 Aug at Pictured Rocks National Lakeshore, *Alger* (BJ, MP). HRT – 57 on 6 Sep at Metro Beach

Metropark, *Macomb* (ATC). LRD – 3 on 13 Oct at Warren Dunes SP, *Berrien* (WEJ).

Hermit Thrush (9,10,23) Singles on 16 Sep at LEMP (WGP) and 23 Sep at Muskegon Lake Nature Preserve, *Muskegon* (BJ) were quite early for the SLP. HRT – 45 on 18 Oct at Metro Beach Metropark, *Macomb* (ATC).

Wood Thrush (2,3,10) LRD – singles on 4 Oct in Hillsdale (JR) and Kalamazoo (RK). UP reports came from *Delta* and *Iron*. NLP reports came from *Bay* (singles on 2 Aug and 30 Sep in Bangor Twp., GP, EP), *Emmet* (2 on 10 Aug at Sturgeon Bay Point, RB), and *Otsego*.

American Robin (14,26,35) HRT – 619 on 6 Sep in Bangor Twp., *Bay* (GP). 1732 from 2 Sep-19 Nov with max of 330 on 30 Sep at WP.

VARIED THRUSH (0,0,1) An ad. female on 22 Nov-TP at Ann Arbor, *Washtenaw* (LWo, BB) represents the county's 2nd record.

Gray Catbird (9,17,35) HRT – 26 on 3 Sep in Kalamazoo (RK). LRD – 1 on 10 Nov at Union City, *Branch* (JO).

Northern Mockingbird (0,0,3) 1 on 19 Aug at PM (ATC); 1 on 24 Aug at Saline Rd., *Monroe* (TW); 3 on 2 Oct at Manchester, *Washtenaw* (JSc); and 1 on 16 Nov in Royalton Twp., *Berrien* (JTW).

Brown Thrasher (3,8,20) HRT – 10 on 5 Sep in Kalamazoo (RK) and 6 on 19 Sep at TPSP (WWS, REr). LRD – 1 on 1 Nov at Metro Beach Metropark, *Macomb* (ATC). UP reports came from *Dickinson* (1 on 26 Sep at Iron Mountain, EJO, GRO), *Mackinac*, and *Ontonagon*.

European Starling (13,25,34) HRT – 10,000 on 14 Nov in Erie Twp., *Monroe* (ATC).

American Pipit (6,14,21) FFM – 1 on 27 Aug at Marquette, *Marquette* (SH). HRT – 100+ on 2 Nov in *Washtenaw* (JG); 92 on 16 Oct at SNWR (DJP); and 78 on 2 Nov in *Berrien* (RB). LRD – 1 on 28 Nov at Olivet, *Eaton* (RCF).

Bohemian Waxwing (3,0,0) 15 on 5 Nov at Shelter Bay, *Alger* (SCH); 6 on 6 Nov at Big Bay Lighthouse, *Marquette* (*vide* SH); 25 from 7-13 Nov with max of 18 on 9 Nov at WP; 2 on 23 Nov at Harlow Lake, *Marquette* (ZG); 50+ on 21 Nov at Grand Marais, *Alger* (CE); and a flock on 24 Nov near Tahquamenon River mouth, *Chippewa* (CG).

Cedar Waxwing (14,22,35) HRT – 426 on 13 Sep at Kensington Metropark, *Oakland* (RWH).

Blue-winged Warbler (0,3,13) HRT – 5 on 26 Aug in Hillsdale (JR). LRD – 1 on 15 Sep at Chippewa Nature Center, *Midland* (JZi). Other NLP reports came from *Bay* and *Iosco*.

Golden-winged Warbler (7,2,5) LRD – 1 on 27 Sep at Wetmore

Pond, *Marquette* (GC) was very late for UP. A male on 28 Aug at Warren Dunes SP, *Berrien* (DSp) was the county's first fall record since 2004. NLP reports came from Bay (2 on 6 Aug in Gibson Twp., DJa) and *Iosco*.

Tennessee Warbler (14,9,24) FFM – singles on 17 Aug in *Iosco* (REr) and *Kalamazoo* (RK). HRT – 21 on 26 Oct in *Kalamazoo* (RK) and 20 on 11 Sep in *Hillsdale* (JR). LRD – 1 on 13 Oct in *Berrien* (MH).

Orange-crowned Warbler (5,6,20) 7 from 13 Sep (FFM)-2 Oct with max of 2 on 15 Sep at WP. 11 banded from 29 Sep-18 Oct with max of 4 on 8 Oct at Muskegon Lake Nature Preserve, *Muskegon* (BJ). Other high counts were 4+ on 22 Sep at Michigan State University, *Ingham* (JPa); 4 on 27 Sep at Au Train, *Alger* (SCH); and 3 on 18 Oct at Metro Beach Metropark, *Macomb* (ATC). LRD – 1 on 25 Oct at Harbor Beach, *Huron* (KOv, SJ, RE, CC).

Nashville Warbler (13,12,23) FFM – 1 on 13 Aug in *Kalamazoo* (RK). 379 from 20 Aug-1 Oct with max of 60 (HRT) on 4 Sep at WP. LRD – 1 on 15 Nov at Munising, *Alger* (SCH, GC, BF) was very late for UP.

Northern Parula (8,4,12) FFM – 1 on 24 Aug at TPSP (WWS, REr). LRD – 1 on 20 Oct in Bangor Twp., Bay (GP, EP) was a new late date for Saginaw Bay area. Other NLP reports came from *Arenac*, Bay (2

on 18 Sep at Pinconning Park, DJa), and *Manistee*.

Yellow Warbler (9,6,19) HRT – 23 on 6 Aug at Harsen's Island, St. Clair (ATC); 22 on 13 Aug and 20 on 14 Aug at Metro Beach Metropark, *Macomb* (ATC); and 12 on 7 Aug at TPSP (REr). LRD – 1 on 21 Sep at Fort Gratiot Nature Preserve, *St. Clair* (DFe, REF).

Chestnut-sided Warbler (11,6,18) HRT – 6 on 27 Aug at Metro Beach Metropark, *Macomb* (ATC); 5 on 25 Aug in *Kalamazoo* (RK); and 4 on 4 Sep at LEMP (WGP). LRD – 1 on 16 Nov at Peninsula Point, *Delta* (DP, SH) was extremely late.

Magnolia Warbler (14,10,25) FFM – 1 on 23 Aug at LEMP (WGP). HRT – 25 on 13 Sep at TPSP (REr); 23 on 19 Sep in *Kalamazoo* (RK); and 20 on 8 Sep at Metro Beach Metropark, *Macomb* (ATC). 39 from 2-20 Sep with max of 13 on 14 Sep at WP. LRD – 16 Oct in *Kalamazoo* (RK).

Cape May Warbler (10,6,17) FFM – 2 on 17 Aug, HRT – 6 on 1 Sep, both along Lake Huron shoreline, *Iosco* (REr). 17 from 29 Aug-10 Oct (LRD) with max of 4 on 9 Sep at WP.

Black-throated Blue Warbler (9,8,18) FFM – 26 Aug in *Chippewa*, *Kalamazoo* (RK), and *Wayne* (WGP). HRT – 23 on 27 Aug, LRD – 1 on 16 Oct, both at Metro Beach Metropark, *Macomb* (ATC).



Yellow-rumped Warbler (14,15,28) 2489 from 21 Aug-1 Nov with max of 148 (HRT) on 13 Sep at WP. 75 on 10 Oct at LEMP (WGP) was the 2nd highest total reported.

Black-throated Green Warbler (11,16,24) 87 from 23 Aug-23 Sep with max of 18 (HRT) on 3 Sep at WP. LRD – 1 on 13 Oct in Saginaw (SW) ties the Saginaw Bay area fall late date.

Blackburnian Warbler (10,7,14) FFM/HRT – 4 on 21 Aug at Fenner Arboretum, Ingham (JR). LRD – 28 Sep in Kalamazoo (RK).

Yellow-throated Warbler (1,0,1) At least 1 was present to 28 Sep at Galien River Basin, Berrien (KM). 1 on 1 Nov at Peninsula Point, Delta (SH, MHe) was the 7th UP record.



Following an interesting summer for this species in the UP was this Yellow-throated Warbler at Peninsula Point, Delta Co. on the unusually late date of 1 November 2008. *Photo by Skye Haas.*

Pine Warbler (7,6,16) FFM – 3 on 7 Aug at TPSP (REr). HRT – 10 on 13 Sep at Huron Wilderness Arboretum, Huron (DR_e, REF) and 7 on 26 Sep along Lake Huron shoreline, Iosco (REr). LRD – 19 Nov at WP.

Prairie Warbler (0,0,1) A male on 2 Aug (BAn), 1 on 6 Sep (TBe), and 1 on 22 Sep (KM), all at Warren Dunes SP, Berrien.

Palm Warbler (6,10,18) 481 from 25 Aug-28 Oct with max of 78 on 22 Sep at WP. Highest total from the LP was 59 on 26 Sep along Lake Huron shoreline, Iosco (REr). LRD – 1 on 19 Nov at Marquette, Marquette (ZG, JH, MHu) was quite late.

Bay-breasted Warbler (8,6,18) FFM – 27 Aug in Kalamazoo (RK). HRT – 5 on 11 Sep in Midland (MKE); 4 on 1 Sep in Kalamazoo (RK); and 3 on 21 Sep at Ann Arbor, Washtenaw (MSJ). LRD – 1 on 12 Oct at Woldumar Nature Center, Eaton (JP_a).

Blackpoll Warbler (11,6,19) FFM – 1 on 27 Aug at Munising, Alger (SCH). HRT – 22 on 13 Sep at TPSP (REr). LRD – 1 on 24 Oct in Wayne (CB).

Cerulean Warbler (0,0,3) Reports came from Jackson (2 singing on 11 Aug in Waterloo Twp., ATC), Livingston, and Muskegon (1 on 1 Sep at Muskegon SGA, CP).

Black-and-white Warbler

(13,13,21) FFM – 2 on 7 Aug at TPSP (REr). HRT – 7 on 21 Sep at Ann Arbor, *Washtenaw* (MSJ); 5 on 1 Sep at WP; and 5 on 7 Sep in *Kalamazoo* (RK). LRD – singles on 1 Oct in *Cheboygan* (MRS) and at Oakwoods Metropark, *Wayne* (WGP).

American Redstart (14,12,26) FFM

– 1 on 1 Aug at Milford, *Oakland* (ATC). HRT – 21 on 13 Sep at TPSP (REr) sets a new Saginaw Bay area fall high count; 18 on 27 Aug at Metro Beach Metropark, *Macomb* (ATC); 18 on 7 Sep in *Ingham* (JR); 16 on 5 Sep in *Kalamazoo* (RK); and 12 on 9 Sep at Warren Dunes SP, *Berrien* (WEJ). LRD - singles on 10 Oct at TPSP (BBE) and WP.

Prothonotary Warbler (0,1,1)

One on 21 Sep at TPSP set a new Saginaw Bay area fall late date (SJ, SSa). The only other report came from *Monroe*.

WORM-EATING WARBLER

(1,0,1) Amazingly late was a bird present for up to 2 weeks in Nov, last observed on 20 Nov, near *Ontonagon*, *Ontonagon* (BCa); only the 6th UP record. 1 on 29 Aug at Warren Dunes SP, *Berrien* (BAn) was the county's 4th fall record.

Ovenbird (9,6,18) HRT – 12 on 16 Sep, LRD – 1 on 7 Oct, both in *Kalamazoo* (RK).

Northern Waterthrush (6,2,11)

FFM – 1 on 14 Aug, HRT – 7 on 30 Aug, 3 Sep, and 6 Sep, all at Metro Beach Metropark, *Macomb* (ATC). LRD – 1 residing at the bird seed aisle inside Lowe's in *Southfield*, *Oakland* from 20 Oct-2 Nov (MT, KOv). NLP reports came from *Iosco* (1 on 24 Aug at TPSP, WWS, REr) and *Montmorency*.

Louisiana Waterthrush (0,0,2)

Reports came from *Macomb* and *Tuscola* (1 on 6 Aug at Murphy Lake SGA, MWi, DJa).

Connecticut Warbler (8,0,8) FFM

– 1 on 4 Aug at Peninsula Point, *Delta* (JH, MHu). HRT – 4 on 5 Sep at Presque Isle bog walk, *Marquette* (SS). LRD – singles on 18 Sep at LEMP (WGP) and Sarett Nature Center, *Berrien* (MMA).

Mourning Warbler (7,4,7) HRT

– 5 on 6 Sep at Metro Beach Metropark, *Macomb* (ATC) and 4 on 15 Sep at Muskegon Lake Nature Preserve, *Muskegon* (BJ). LRD – 1 on 25 Sep at Muskegon Lake Nature Preserve, *Muskegon* (BJ). NLP reports came from *Bay* (1 on 12 Sep in Bangor Twp., GP, EP), *Clare*, *Midland* (1 on 8 Aug at Dow Ponds, MKE), and *Presque Isle*.

Common Yellowthroat (15,14,28)

HRT – 22 on 30 Aug and 20 on 13 Aug at Metro Beach Metropark, *Macomb* (ATC). LRD – 1 on 12 Nov at Bay City SRA, *Bay* (LD).

Hooded Warbler (0,0,7) Reports came from Barry, Berrien (1 on 22 Oct at Bridgman was a county record late date, BA), Lapeer, Livingston, Oakland, Washtenaw (1 on 10 Sep at Ann Arbor, MSJ), and Wayne (1 on 4 Sep at LEMP, WGP).

Wilson's Warbler (12,4,14) FFM – 2 on 7 Aug in Ingham (JR). HRT – 18 on 27 Aug at Metro Beach Metropark, Macomb (ATC). 39 banded from 28 Aug-6 Oct (LRD) with max of 11 on 12 Sep at Muskegon Lake Nature Preserve, Muskegon (BJ). NLP reports came from Arenac, Bay (1 on 1 Sep in Bangor Twp., GP, EP), Iosco (4 on 6 Sep, REr, 1 on 16 Sep, DBG, and 1 on 19 Sep, WWS and REr, all at TPSP), and Manistee.

Canada Warbler (10,2,13) FFM – 1 on 1 Aug at Mayville, Tuscola (MWi). HRT – 5 on 27 Aug at Metro Beach Metropark, Macomb (ATC). LRD – 1 on 24 Sep at WP. NLP reports came from Arenac (1 on 7 Aug, DJa) and Iosco.

SUMMER TANAGER (0,0,1) One on 19 Nov at Oxford, Oakland (NMB).

Scarlet Tanager (2,9,21) LRD – singles on 12 Nov at Lakeport SP (HD) and 7 Nov at Fort Gratiot (DEM), both St. Clair. UP reports came from Alger and Gogebic.

Eastern Towhee (1,3,29) HRT – 6 on 24 Aug at Fish Corners, Van Buren (RB); 6 on 7 Oct in Kalamazoo (RK); 4 on 20 Aug at

Mayville, Tuscola (MWi); 4 on 11 Oct at Metro Beach Metropark, Macomb (ATC); and 4 on 24 Oct at Belle Isle, Wayne (ATC). UP report came from Iron. NLP reports came from Clare, Isabella, and Midland (1 on 21 Oct in Homer Twp., GEV, JKV).

American Tree Sparrow (4,12,27) FFM – 2 on 30 Sep at St. Ignace, Mackinac (SBa). HRT – 140 on 6 Nov at SNWR (DJP). Other UP reports came from Alger (2 on 9 Oct at Shelter Bay, SCH), Chippewa (138 from 8 Oct-13 Nov with max of 20 on 28 Oct at WP), and Luce.

Chipping Sparrow (14,18,29) 604 from 21 Aug-16 Oct with max of 105 (HRT) on 14 Sep at WP. LRD – 1 on 25 Nov in Washtenaw (DSJ).

Clay-colored Sparrow (6,2,5) FFM – 1 on 5 Sep at WP. HRT – 2+ on 20 Sep at Rose Lake Wildlife Recreation Area, Clinton (PD) and 10 Oct at Potterville, Eaton (DMc). NLP reports came from Iosco and Missaukee.

Field Sparrow (1,7,25) HRT – 8 on 29 Sep at Fort Gratiot Nature Preserve, St. Clair (DFe, REF) and 1 Oct at Lincoln Brick Park, Clinton (JB). LRD – 24 Nov at Kensington Metropark, Oakland (RWH). The only UP report came from Delta.

Vesper Sparrow (11,5,10) LRD – 2 on 21 Oct in Alamo Twp., Kalamazoo (RS).

LARK SPARROW (1,0,0) Singles on 2 Sep (TB) and 2-3 Nov (CN) at WP; both accepted by MBRC.



This Lark Sparrow photographed on 2 November 2008 at Whitefish Point was the second there this season, the first being in September. *Photo by Chris Neri.*

Savannah Sparrow (13,9,19) HRT – 66 on 9 Oct at SNWR (DJP). LRD – 1 on 1 Nov at Tiscornia, Berrien (AV, DVi).

Grasshopper Sparrow (0,0,5) Reports came from Berrien (1 Aug at Sarett Nature Center, JTW), Ingham (2+ on 6 Aug, TRW, DMc), Lenawee, St. Clair, and Wayne.

Henslow's Sparrow (0,1,1) Last heard singing on 5 Aug in Hillsdale (JR). 1 on 12 Oct at Chippewa Nature Center, Midland (MKE) set a new Saginaw Bay area fall late date.

LeConte's Sparrow (3,0,1) One on 29 Aug at Point La Barbe, Mackinac (SJ); 1 on 21 Sep at Laughing Whitefish Peninsula, Alger (SCH); 1 on 22 Sep and 2 on 28 Sep at

Presque Isle Bog, Marquette (SH, DP); and 2 on 16 Oct at SNWR (DJP).

NELSON'S SPARROW (0,0,1) 2 on 27 Sep at Andrews University, Berrien (TB, m.ob.); accepted by MBRC.



Nelson's Sparrow is the new, mercifully shorter name for the Nelson's Sharp-tailed Sparrow thanks to the AOU checklist supplement published in July 2009. This shy, skulky sparrow is rarely seen in Michigan, and even more rarely photographed here. This lucky shot was taken on 27 September 2008 at Andrews University in Berrien Springs, Berrien Co. *Photo by Tim Baerwald.*

Fox Sparrow (4,4,21) FFM – 1 on 30 Sep at Shelter Bay, Alger (SCH). HRT – 18 on 4 Nov at Belle Isle, Wayne (ATC). LRD – 2 on 19 Nov at Midland, Midland (MD). 11 from 2-17 Oct with max of 3 on 15 Oct at WP. Last reported in the UP on 11 Nov at Shelter Bay, Alger (SCH); other UP reports came

from Gogebic and Keweenaw (first reported on 13 Oct at Allouez, NA). Other NLP reports came from Bay (2 on 3 Oct in Hampton Twp., JSo), Crawford, Midland (7 on 27 Oct in Homer Twp., GEV, JKV), and Wexford.

Song Sparrow (14,19,35) HRT – 40 on 18 Oct and 36 on 13 Aug at Metro Beach Metropark, Macomb (ATC); 38 on 9 Oct at SNWR (DJP); and 32 on 6 Aug at Harsen's Island, St. Clair (ATC).

Lincoln's Sparrow (14,4,17) FFM – 2 on 13 Sep at Huron Wilderness Arboretum, Huron (DFe, REF) and at WP. HRT – 4 on 18 Sep at Metro Beach Metropark, Macomb (ATC) and on 29 Sep at Muskegon Lake Nature Preserve, Muskegon (BJ). NLP reports came from Alcona, Bay (1 on 16 Sep in Hampton Twp., JSo, and last reported on 20 Oct at Bay City SRA, LD), Iosco, and Presque Isle.

Swamp Sparrow (13,9,20) HRT – 22 on 28 Sep and 23 on 2 Oct at Metro Beach Metropark, Macomb (ATC); 22 on 16 Oct at SNWR (DJP); and 18 on 10 Oct at WP. LRD – 1 on 22 Nov at Ludington SP, Mason (DCD, TG).

White-throated Sparrow (14,17,29) HRT – 100+ on 18 Sep at TPSP (RD, MHa); 97 on 4 Oct, 80 on 11 Oct, 79 on 16 Oct, 68 on 2 Oct, and 65 on 9 Oct, all at Metro Beach Metropark, Macomb (ATC); and 75+ on 12 Oct at Woldumar

Nature Center, Eaton (JPa). 642 from 23 Aug-16 Oct with max of 55 on 20 Sep at WP.

Harris's Sparrow (2,0,1) Very low numbers this year. A juv. on 3 Sep at Copper Harbor, Keweenaw (SJ) was very unusual and early considering the lack of birds this year. Other reports were an imm. on 3 Oct at SNWR (DJP); 1 on 9-10 Oct at WP; and 1 on 11 Oct at Eagle Harbor, Keweenaw (LCB).

White-crowned Sparrow (7,18,26) 437 from 15 Aug (FFM)-17 Oct with max of 77 (HRT) on 2 Oct at WP. Next highest total reported was 50+ on 18 Sep at TPSP (RD, MHa).

Dark-eyed Junco (9,17,32) 529 from 13 Sep-11 Nov with max of 87 (HRT) on 15 Oct at WP. Next highest reported total was 45 on 27 Nov in Kalamazoo (RK).

Lapland Longspur (2,5,8) 158 from 9 Sep (FFM)-15 Nov with max of 30 on 15 Oct at WP. HRT – 200 on 26 Nov in Hillsdale (JR). 1 on 15 Sep at New Buffalo, Berrien (KM) set the county's record early date. The only other UP report came from Alger.

SMITH'S LONGSPUR (1,0,0) 2 on 12 Sep at Shelter Bay, Alger (SCH, DP); accepted by MBRC.

Snow Bunting (6,12,19) 572 from 3 Oct (FFM)-17 Nov with max of 150 on 21 Oct at WP. HRT –

1000+ on 25 Nov at Dutcher Rd., Tuscola (KL) and ~1000 on 1 Nov at MWS (CP).

Northern Cardinal (6,20,35) HRT – 58 on 1 Nov in Kalamazoo (RK). A female on 8 Nov at McCormick Tract Wilderness Area, Marquette (SH) was unusual for such a remote location; other UP reports came from *Alger*, *Chippewa*, *Delta*, *Dickinson*, and *Mackinac*.

Rose-breasted Grosbeak (11,16,27) HRT – 23 on 14 Aug in Cheboygan (MRS). LRD – 1 on 17 Oct at Midland, *Midland* (JZi).

Indigo Bunting (11,9,25) HRT – 12 on 7 Aug in Ray Twp., *Macomb* (ATC) and 8 on 6 Oct at Andrews University, *Berrien* (RB). LRD – 1 on 10 Oct at SNWR (SFK).

Dickcissel (1,0,3) Present to 4 Aug at Hildebrand Hills subdivision, *Berrien* (MOs, JTW); 1 on 6 Sep at MWS (SMi) was county's first Sep record; 1 on 4 Oct in *Wayne* (CB); and 1 on 18-24 Oct at WP.

Bobolink (3,3,10) HRT – 1096 on 28 Aug set a new Saginaw Bay area peak count, LRD – 114 on 29 Sep; both at SNWR (DJP). UP reports came from *Delta*, *Keweenaw*, and *Menominee* (30 Aug, SJ). NLP reports came from *Bay*, *Gladwin*, and *Iosco* (1 on 16 Sep at TPSP, DBG).

Red-winged Blackbird (10,21,33) HRT – 2500+ on 12 Sep in Hampton Twp., *Bay* (JSo) and 1500

on 5 Oct at Fort Gratiot Nature Preserve, *St. Clair* (DFe, REF).

Eastern Meadowlark (4,7,17) HRT – 22 on 2 Oct at Sagatoo Rd., *Arenac* (JSo) was a new Saginaw Bay area fall high count and 16 on 2 Oct at MWS (JPo). UP reports came from *Alger*, *Delta*, *Mackinac*, and *Ontonagon*.

Western Meadowlark (0,0,1) One on 3 Oct at Willow Run Airport, *Wayne* (ATC).

Yellow-headed Blackbird (1,1,2) 3 on 19 Aug at Nayanquing Point, *Bay* (MWi, NSH); 1 on 8 Sep at *Montague*, *Muskegon* (KS); 1 on 14 Sep at Crow Island SGA, *Saginaw* (REr); and a report from *Dickinson*.

Rusty Blackbird (4,12,21) 14 from 15 Sep (FFM)-30 Oct with max of 4 on 2 Oct at WP. HRT – 1500 on 1 Nov in *Wayne* (CB). LRD – 15 Nov in *Hillsdale* (JR). Other UP reports came from *Alger* (first reported on 2 Oct at Shelter Bay, SCH), *Baraga* (peak of 25 on 17 Oct at Arnheim, LCB), and *Mackinac* (first report was 4 on 30 Sep at St. Ignace, SBa).

Brewer's Blackbird (7,4,5) HRT – 25 on 25 Aug at Iron Mountain, *Dickinson* (EJO, GRO). NLP reports came from *Alpena*, *Cheboygan*, *Clare*, and *Presque Isle*.

Rusty/Brewer's Blackbird (1,0,0) 20+ on 8 Nov at Van Riper SP, *Marquette* (SH) was late for the UP.

Common Grackle (11,19,28) HRT – 5000 on 1 Nov at Metro Beach Metropark, *Macomb* (ATC).

Brown-headed Cowbird (6,6,27) HRT – 500 on 12 Oct at Schneider Rd., *Washtenaw* (MSJ)

Orchard Oriole (0,1,1) Female on 11 Sep at Patterson Rd., *Midland* (MKE) set a new Saginaw Bay area late date. 1 on 22 Sep in Oronoko Twp., *Berrien* (fide JTW).

Baltimore Oriole (4,9,27) HRT – 8 on 7 Aug at TPSP (REr) and 28 Aug at LEMP (WGP); 6 on 24 Aug at Lexington, *Sanilac* (DFe, REF); and 5 on 14 & 23 Aug in Clyde Twp., *St. Clair* (SBH) and 24 Aug in Hamburg Twp., *Livingston* (ATC). LRD – 1 on 19 Sep at Lansing, *Ingham* (DMc). UP reports came from *Delta*, *Dickinson* (last reported on 27 Aug at Iron Mountain, EJO, GRO), *Gogebic*, and *Iron*.

Pine Grosbeak (2,1,0) 34 from 22 Oct (FFM)-18 Nov with max of 7 on 4 & 13 Nov at WP. The only other reports came from *Alcona* and *Alger* (first reported on 1 Nov at Munising, SCH).

Purple Finch (9,15,22) FFM – 1 on 6 Aug at Mayville, *Tuscola* (MWi). 3481 from 22 Aug-15 Nov with max of 700 (HRT) on 24 Oct at WP.

House Finch (6,12,29) HRT – 55 on 27 Nov in Kalamazoo (RK) and 35 on 2 Nov at Bay City, *Bay* (JSo).

Red Crossbill (4,1,1) Reported from Chippewa (59 from 13 Oct-10 Nov with max of 39 on 6 Nov at WP), *Huron*, *Iron*, *Keweenaw*, *Marquette*, and *Presque Isle*.

White-winged Crossbill (11,9,8) Major southward movement was the beginning of an unprecedented irruption! 1633 from 15 Aug-17 Nov with max of 420 (HRT) on 31 Oct at WP. 27 on 10 Nov near Cooke Dam, *Iosco* (WWS) was a new Saginaw Bay area peak count. SLP reports came from *Allegan*, *Huron*, *Muskegon* (~20 on 6 Nov at Norton Shores, CDy, was first county record since 1997), *Oakland*, *Saginaw*, *Washtenaw*, and *Wayne*.

Common Redpoll (5,3,1) Reports came from *Alger* (first report was 4+ on 1 Nov at Munising, SCH), *Bay*, *Berrien* (first report was 1 on 25 Nov at Berrien Springs, MOs), *Chippewa* (1097 from 22 Oct-19 Nov with max of 301 on 11 Nov at WP), *Gogebic*, *Mackinac*, *Marquette*, *Mason* (30 on 18 Nov at Ludington SP, DCD), and *Midland* (5 on 11 Nov in Larkin Twp., MKE).

Pine Siskin (13,16,27) 12,550 from 26 Aug-15 Nov with max of 1404 (HRT) on 23 Oct at WP. Another high total was 800+ on 23 Oct at TPSP (REr, WWS).

American Goldfinch (14,24,32) 1552 from 19 Aug-19 Nov with max of 300 (HRT) on 1 Nov at WP.


Evening Grosbeak (9,5,1) 38

from 15 Aug-6 Nov with max of 10 (HRT) on 31 Oct at WP. The lone SLP report was 6 on 4 Nov in Oronoko Twp., Berrien (AV).

House Sparrow (10,18,32) HRT – 90 on 15 Nov at Inkster, Wayne (ATC); 75 on 7 Nov at Bay City Mall, Bay (GP, EP); and ~70 on 19 Oct in Saginaw Twp., Saginaw (DJP).

Exotics

Whooping Crane (0,2,4) One in Henrietta and Leoni Twps., Jackson from 1 Aug-16 Nov (RHo); female #44-07 on 2 Aug at AuGres, Arenac (DJa) was also observed in Alpena; female #40-07 from spring-12 Oct at ASGA (RB); and one from Summer-early Sep in Hamilton Twp., Van Buren was later seen in Kalamazoo (RM, MMy, m.ob.).

Observers

Larry M. Abraham (LMA), Karen L. Allard (KLA), Brian Allen (BA), Linda Allen (LA), Brad Anderson (BAn), Jen Anderson (JA), Ron Annelin (RA), Frank Apsey (FA), Dea Armstrong (DA), Bob Arthurs (BAr), Daryl Aspery (DAs), Gordon Atkins (GA), Nancy Auer (NA), Tom Auer (TA), Judy Bach (JBa), Sean Bachman (SeB), Tim Baerwald (TB), Rick Baetson (RBA), Shelly Bailey (ShB), Pat Baize (PB), Steve Baker (SBa), Chris Barrigar (CBa), John Baumgartner (JB), Mary Ann Baumgartner (MAB), Pat Bazany (PBa), Heidi Beardsley (HB), John Beasley (JBe), Giff Beaton (GB), Holly Beckermeyer (HBe), Tom Beeke (TBe), Bob Bell (BBe) Sandy Bellemore (SBe), Glenn Belyea (GBe) Vicki Bennon (VB), Mike Berg (MB), Martin Bialecki (MBi), Laurence C. Binford (LCB), Al Borodayko (AB), Michael Boston (MBo), Bruce Bowman (BB), Clara Bratton (CBr), Diane Braybrook (DB), Calvin Brennan (CB), Rick Brigham (RB), Barb Brockway (BBr), Jeff Brockway (JBr), Jim Brosnan (JiB), Joseph Brown (JoB), Nancy M. Brown (NMB), Mary E. Brunken (MEB), Marvin Budd (MBu), Brad Bumgartner (BBu), Steve Burke (SB), Adam M. Byrne (AMB), Norma Cabot (NCa), Pat Calvert (PCa), Jerry Calvert (JC), Mary Joe Canaday (MJC), Betty Carmichael (BCa), Arthur L. Carpenter (ALC), Thomas W. Carpenter (TWC),

Rob Carr (RCa), Cathy Carroll (CC), Ashley Casey (AC), Mary Cecchi (MCe), Don Chalfant (DoC), Mike Champagne (MC), Allen T. Chartier (ATC), Peg Cheney (PCh), Deb Christopherson (DCh), Philip C. Chu (PCC), Lathe Claflin (LC), Susan Clark (SC), Greg Cleary (GC), Karen Cleveland (KCl), Bruce Cohen, (BCo), Bernie Coleman (BC), Karen Conat (KC), Randy Conat (RC), Doug Cook (DC), Julie Craves (JCr), Nathan Crawford (NC), Becky Csia (BCs), Dave Cuthrell (DCu), Paul Cypher (PC), Jim J. Dastyck (JJD), Harriet Davidson (HD), Susan Davis (SD), Jan Dennett (JD) George Desort (GD), Pat Deventer (PD), Carol DeWitt (CaD), Charles DeWitt (CD), Feller DeWitt (FD), Marcia Dilling (MD), David C. Dister (DCD), Louie Dombroski (LD), Elaine Dougovito (ED), Dan Duso (DD), Curtis Dykstra (CDy), Ryan Dzedzic (RD), Ron Eggleston (REg), Sue Eggleston (SE), Carrie Elzinga (CE), Russell E. Emmons (REE), Eric Enbody (EE), Robert Epstein (RE), Roger Eriksson (REr), Monica K. Essenmacher (MKE), Harold Eyster (HE), Joseph Faggan (JFa), Denise Fearnow (DFe), Randall E. Fearnow (REF), Liz Febba (LF), Sam Febba (SF), Bill Flack (BF), Richard C. Fleming (RCF), Laurent Fournier (LFo), Jim Fowler (JF), Chip Francke (CF), Val Frawley (VF), Carl Freeman (CFr), Darlene Friedman (DF), Steve Frye (SFr), Erin Fuller (EF), Nate Fuller (NF), Ron Gamble

(RG), Steve Gasser (SG), Delores B. Gavit (DBG), Zach Gayk (ZG), Jacco Gelderloos (JG), Cory W. Gildersleeve (CWG), Nancy Gillis (NG), Wayne Glieber (WG), Leonard Graf (LG), Tim Granger (TG), Cory Gregory (CG), Fred Guyer (FG), Skye Haas (SH), Mic Hamas (MHa), Steve Hamberg (SHa), Lyle Hamilton (LH), Eric Hansen (EH), Russ Hanson (RHa), Doug Hansz (DH), Roger Harbin (RH), Natalie Harper (NH), Jim Haw (JHa), Deb Hecox (DeH), Lee Hefner (LHe), Tom Hendrickson (TH), Don Henise (DHe), Robyn Henise (RHe), Max Henschell (MHe), Jim Hewitt (JHe), Scott C. Hickman (SCH), Roger Hill (RH*i*), Mary Hindelang (MHi), Ron Hoffman (RHo), Jude Holloway (JHo), Susan B. Holth (SBH), Eileen Horne (EHo), Robert W. Hotaling (RWH), Rex Hubbard (RHu), Joanie Hubinger (JH), Mark Hubinger (MHu), Matt Hysell (MH), Doug Jackson (DJa), John Jann (JJa), Don Jennette (DJ), Margaret S. Jewett (MSJ), Scott Jennex (SJ), Alice Johnson (AJ), Brian Johnson (BJ), Jeff Johnson (JJ), Keith Johnson (KJ), Rhonda Johnson (RJ), Matt Johnstone (MJ), Wendy E. Jones (WEJ), Jerry Jourdan (JJo), Jeff Kacos (JKa), Steve F. Kahl (SFK), Joe Kaplan (JK), Rich Keith (RK), Bob Kingsbury (BK*i*), Matt Kitzman (MK), Michaele Klingerman (MK*i*), Leah R. Knapp (LRK), Bob Koning (BK), Linda Koning (LK), Roger Kuhlman (RKu), Jerry Lang

(JLa), Jonathan Lautenbach (JL), Joseph Lautenbach (JoL), Lee Laylin (LL), Roger Laylin (RL), Kim LeBlanc (KL), Bob Leppard (BL), Greg Links (GL), Jerry Lisiecki (JLi), Janea Little (JaL) Shawn Loewen (SL), Ann Luft (AL), Lance Mack (LMa), Steve Madziar (SMa), Mike Mahler (MMa), Blake Mann (BMa), Carl Manning (CM), Judy Manning (JM), Karen Markey (KMa), Bill Martinus (BiM), Jim McGrath (JM*c*), Charlie McKelvey (CM*c*), Natalie McKelvey (NM), Doug McWhirter (DM*c*), Marianne McWhirter (MM*c*), Lester Merklin (LM*e*), Kevin Meyer (KM*e*), Daniel E. Miller (DEM), Dee Miller (DM), Kip Miller (KM), Steve Minard (SM*i*), Andre Moncrieff (AM), Mike Moran (MM), Kathryn Mork (KM*o*), John A. Moroni (JAM), Margaret Morton (MM*o*), Sena Mulder (SM), Jim Mullins (JM*u*), Brad Murphy (BM), Lynn Murphy (LM), Dawn Mutz (DM*u*), Mary Myrkle (MM*y*), Ralph Myrkle (RM), Richard Naber (RN*a*), Joe Nault (JN), Chuck Nelson (CNe), Sheryl Nelson (SN), Chris Neri (CN), Rick Neubig (RN), Liz Notman (LN), Beth Olsen (BO), Julie Olsen (JO), Evelyn J. Olson (EJO), Gary R. Olson (GRO), Marie Ostrander (MO*s*), Ray Ostrander (RO), Karl Ott (KO), Karl Overman (KO*v*), Mike Overway (MO), Bob Paetchow (BP), Bob Palomaki (BP*a*), Mike Parker (MP*a*), David Pavlik (DP), Jeff Pavlik (JP*a*), Rosemary Pavlik (RP*a*), Tom Pavlik (ToP), Torsten

Pawloski (TPa), Walter G. Pawloski (WGP), Ric Pedler (RP), Connie Peoples (CPe), David J. Peters (DJP), Ellen Peterson (EP), Glenn Peterson (GP), Micah Petersen (MP), Joyce Peterson (JP), John Plough (JPI), James Ponshair (JPo), Donald E. Poppe (DEP), Doug Powless (DPo), Joe Prochaska (JPr), Caleb Putnam (CP), Betty Rainwater (BR), Charlie Ramsey (CR), Alexis Raney (AR), William J. Rapai (WJR), Paul Reece (PRe), Jack Reinoehl (JR), Beth Rogers (BR), Dietrich W. Roloff (DWR), Paul Roose (PR), Ryne Rutherford (RR), Vince Ste.-Marie (VSM), Mike Sanders (MSa), Steve Santner (SSa), Sandy Schacht (SaS), Lynn Schense (LS), Russ Schipper (RS), Kirk Schrader (KSc), Matt Schroderus (MS), Adel Schultz (ASc), Conrad Schultz (CSc), Jeff Schultz (JSc), Chris M. Schumacher (CMS), Susan Schuur (SSc), Briona Seaver (BS), Mike Sefton (MSe) Ian Shackelford (IS), Wayne W. Shawl (WWS), Napier Shelton (NSh), Jan Shillito (JS), Alan Shlosberg (AS), Dave Sing (DS), Nick Sisamus (NSi), Kris Slager (KS), Ed Smith (ES), Sherry Smith (SSm), Mike Snable (MSn), Carol Snoek (CS), Terri Snook (TS), Joe Soehnel (JSO), Dan Sparks-Jackson (DSJ), Scott Stewart (SS), Ray Stocking (RSt), Faye Stoner (FS), Katherine Strassberg (KSt), Bob Stevens (BSt), Nate Strong (NS), Michael R. Supernault (MRS), John Swales (JSw), Carol Szaroletta (CSz), Keith Taylor

(KT), Kevin Thomas (KTh), Barb Thornbury (BT), Verl Tisch (VT), John L. Trapp (JLT), Mary Trombley (MT), Carolyn Troop (CT), Divone Trosper (DT), Pat Underwood (PU), Jerry Urquhart (JU), Jim VanAllen (JV), Dale Vanderwier, (DV), Alice Van Zoeren (AVZ), Alison Vilag (AV), David Vilag (DVi), David C. Vinnedge (DCV), George E. Vogel (GEV), Judy K. Vogel (JKV), Phil Vreeman (PV), Kyle Waite (KW), John Walhout (JW), Mindy Walker (MW), Steve Waltz (SW), Nancy Warren (NW), Carol Watson (CWa), Will Weber (WW), Tex Wells (TW), Carolyn Weng (CW), Grant Weyburne (GWe), Lucy Wheeker (LW), Thomas R. Wheeker (TRW), Carolyn White (CWWh), George Wickstrom (GW), John Will (JWi), Myles Willard (MWi), Phil Willemstein (PW), Rick Willey (RWi), Doug Williams (DW), Ellen Williams (EW), Roger Wise (RoW), Chuck Witkoski (CWi), Jenna Woods (JWo), Laura Wooley (LWo), Jonathan T. Wuepper (JTW), Mary Wyatt (MWy), Roger Wykes (RW), Matt Yawney (MY), Joseph Youngman (JY), Molly Zahn (MZ), Jerry Ziarno (JZi), Ray Ziarno (RZ), Joy Ziemncik (JZ), Kirk Zufelt (KZ)

Suggestions to Authors

Michigan Birds and Natural History welcomes articles and short notes on appropriate topics. See past issues for guidance.

Submit two double-spaced copies to the Editor along with all tables and figures. Include a computer diskette or CD labeled with the file names of the manuscript (which should be single-spaced on disk), tables and figures; software version used for each file (Microsoft Word and WordPerfect preferred for text); and author(s) name. Tables and figures should not be integrated into the text, and should be provided in the format in which they were originally created (i.e., Excel, Adobe Illustrator, etc.). Large tables and charts should be tall rather than wide. Electronic submissions are welcome; text should be transmitted as document files (*.doc). Figures should be sent in native format.

No abstract is necessary. Measurements should be given in English units (e.g., inches, acres) followed by metric units (e.g., centimeters, hectares). Use continental dating (e.g., 17 December 1962) and the 24-hour clock (e.g., 0800 and 1345) and standard time (not daylight savings time). Common names of birds (and other organisms) should be capitalized (e.g., Least Bittern). Italicized scientific names should follow the first mention of a species, and conform to the A.O.U.'s *Checklist of North American Birds, 7th edition* (1998) and its supplements, and the current accepted authoritative reference for other organisms (available from editors upon request). Sequence of bird lists should similarly follow A.O.U. sequence. Material in tables should not duplicate data in text. Tables and figures should be numbered separately and sequentially, and have a short title.

Text citations should include author and year (e.g., Craves 1995), and multiple citations should be in chronological order. Citations at end of text should be listed as "Literature Cited." If you use web pages in your references, please follow the following format:

Author(s). Name of page. Date of posting/revision. Date of access. <electronic address> (i.e., URL). For format of other references, please see past issues.

Photographs can be submitted as prints, 35mm slides, or high resolution JPEG files (larger is better) on a disk. Photos of rarities from each season are particularly sought, on a timely basis, and excellent photos of other Michigan species are also desired.

All articles will be sent out for peer review. Based on the reviews, the article will be revised and accepted for publication (if revisions are primarily grammatical and not of a substantive nature), or returned to the author to be rewritten. We reserve the right to review and edit articles according to style, grammar, accuracy, and readability.



Submission Deadlines for MBNH

Issue

January 1.....	No. 1 (Jan-Mar)
March 1	No. 2 (Apr-May)
May 1.....	No. 3 (Jun-Aug)
August 1.....	No. 4 (Sep-Oct)
October 1.....	No. 5 (Nov-Dec)

Send all submissions to:
Caroline de Mauriac, Managing Editor
birds@michiganaudubon.org

Become a MBS Participant

The mission of the Michigan Bird Survey (MBS) is to provide a forum for the publication of bird observations in Michigan. The survey consists of the following four seasons:

Winter: December — February

compiler — Jon Wuepper
wuepperj@hotmail.com

Spring: March — May

compiler — Jack Reinoehl
jreinoehl@hillsdale.edu

Summer: June — July

compiler — Louis Dombroski
louie_dombroski@yahoo.com

Fall: August — November

compiler — Adam M. Byrne
byrnea@msu.edu

To participate in the survey you can be placed on the mailing list by sending your name and address to:

Kalamazoo Nature Center/MAS Seasonal Bird Survey
7000 N. Westnedge Ave.
Kalamazoo, Michigan 49009

The forms are also available from the MAS website at:

[http://michiganaudubon.org/research/surveys_forms_data/
seasonal_surveys/index.html](http://michiganaudubon.org/research/surveys_forms_data/seasonal_surveys/index.html)

Butterfly Records Wanted

Please participate in the Michigan Butterfly Survey by sending your observations to:

Jack Reinoehl
107 State St. #3
Hillsdale MI 49242

E-mail: jreinoehl@hillsdale.edu

MICHIGAN BIRDS

and Natural History

April - May 2009

Volume 16 Number 2

Articles:

- Incidental Feeding Behavior in Gray Squirrels and
White-tailed Deer
Dennis A. Meritt Jr. 49
- Late Autumn Population of Sandhill Cranes in Michigan
Ronald H. Hoffman 53

Surveys:

- Michigan Butterfly Survey, 2008
Jack Reinoehl 62
- Michigan Bird Survey: Autumn 2008 (August-November)
Adam M. Byrne 73